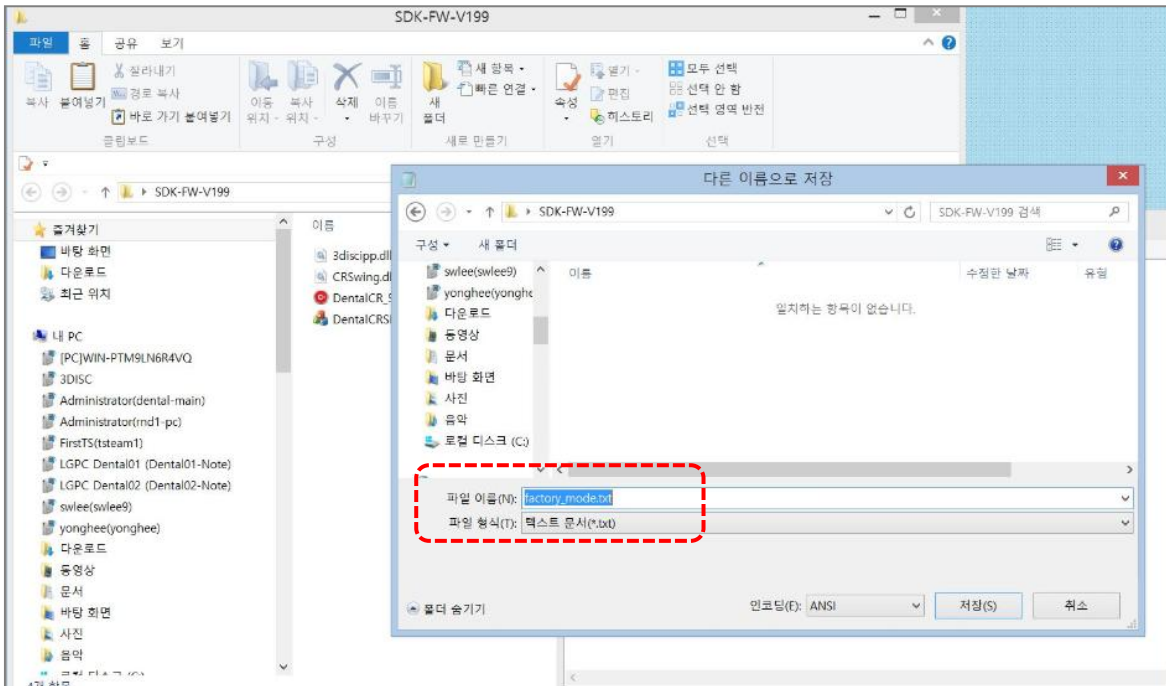


- 1) Open Notepad.
- 2) Add Notepad named factory\_mode.txt in the Software folder.

Please note that DentalCR\_SystemUpdater and factory\_mode.txt must be in the same folder.



- 3) Run DentalCR\_SystemUpdater.exe as administrator rights.  
Firmware as factory mode is opened.
  - 4) Click "Connect", show the scanner info such as serial number and current firmware version etc.  
It means that it is connected.
  - 5) Select correct version in the Parts Information section.  
Each item such as step motor, main board, and ROHS LCD etc is automatically selected.
- For your reference, please refer to the following picture for each version in next page
- 6) Click "Update".
  - 7) Reboot the scanner in order to load new data.

[AF version]

DentalCR System Updater\_20160817

Dental type  
updater version: 1.0.0.221

Connect

update

Parts Information

LOT

AA v1     AD     AH  
 AA v2     AE     AJ  
 AB     AF  
 AC     AG

step motor

screw     sst 10mm     ws 10mm(AH)  
 wm 20mm     ws 10mm(~AG)     SAEHAN

main board

coreboard 2.0     mainboard 1.01     mainboard 2.0 or

ROHS LCD    door type    f-θ

no     old     no  
 yes     AG     yes  
 AH

[AG version]

DentalCR System Updater\_20160817

Dental type  
updater version: 1.0.0.221

Connect

update

Parts Information

LOT

AA v1     AD     AH  
 AA v2     AE     AJ  
 AB     AF  
 AC     AG

step motor

screw     sst 10mm     ws 10mm(AH)  
 wm 20mm     ws 10mm(~AG)     SAEHAN

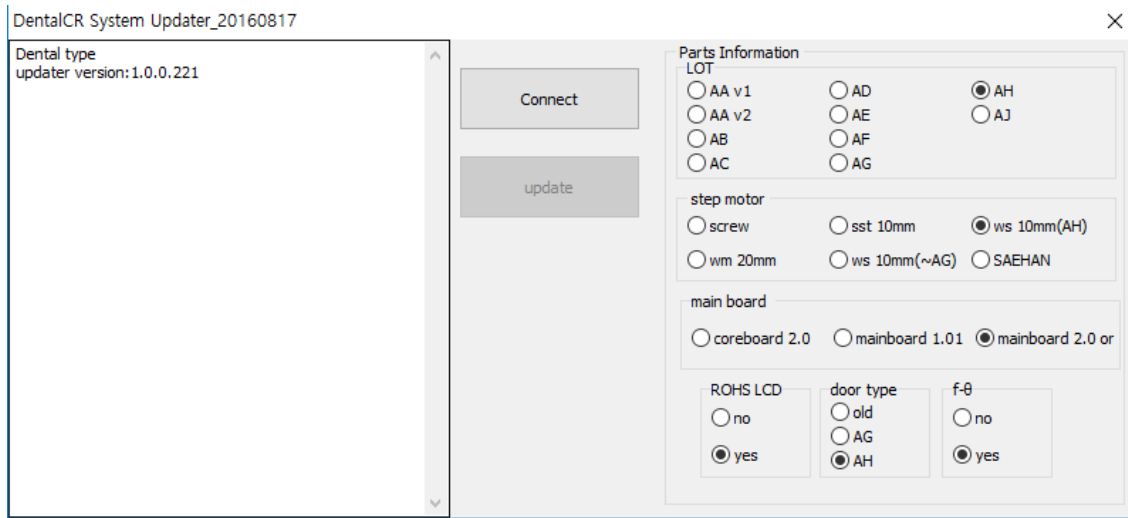
main board

coreboard 2.0     mainboard 1.01     mainboard 2.0 or

ROHS LCD    door type    f-θ

no     old     no  
 yes     AG     yes  
 AH

[AH version]



[AJ version]

