

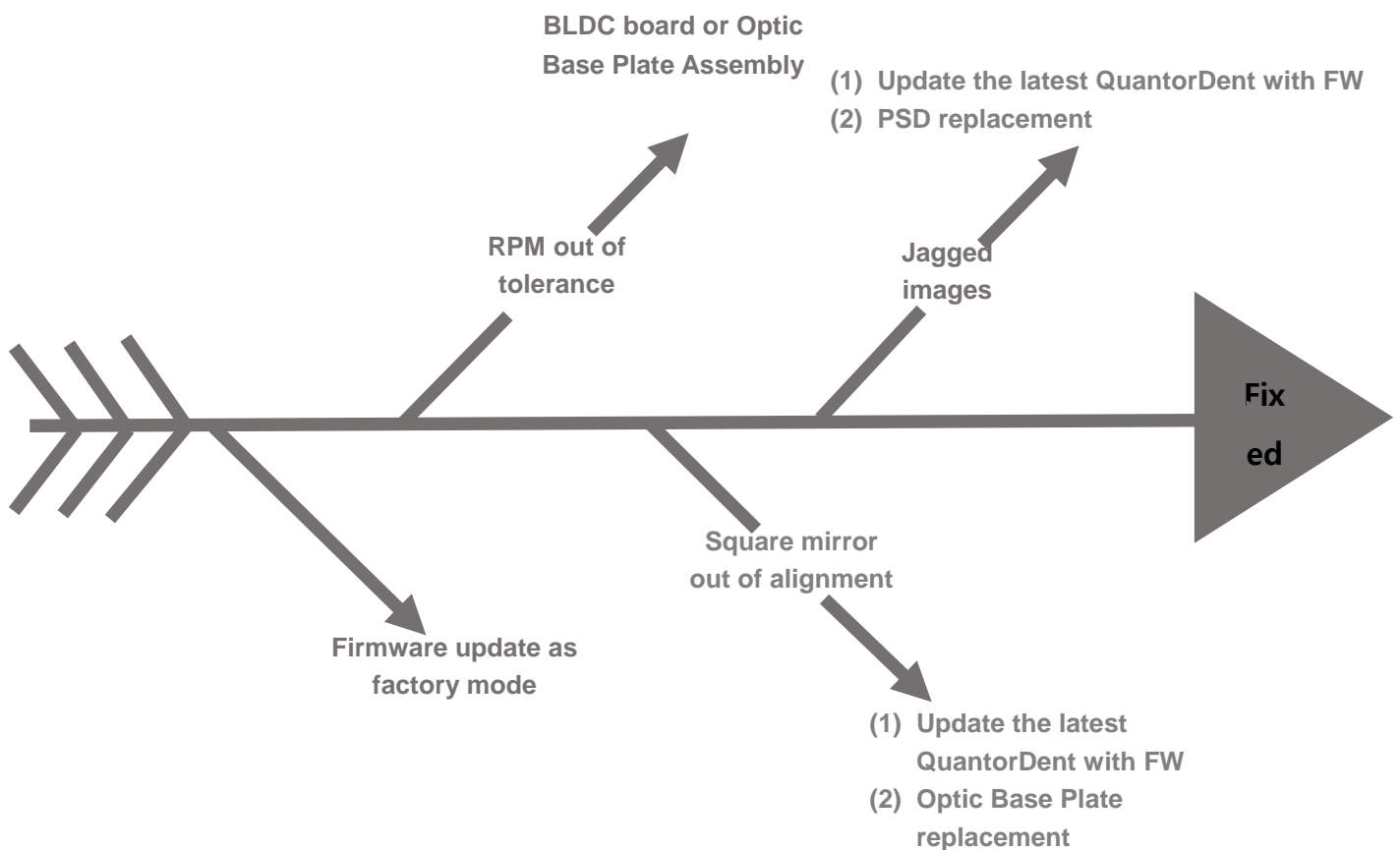
- **Model**

FireCR Dental

- **The Description of the Problem**

Fuzzy images

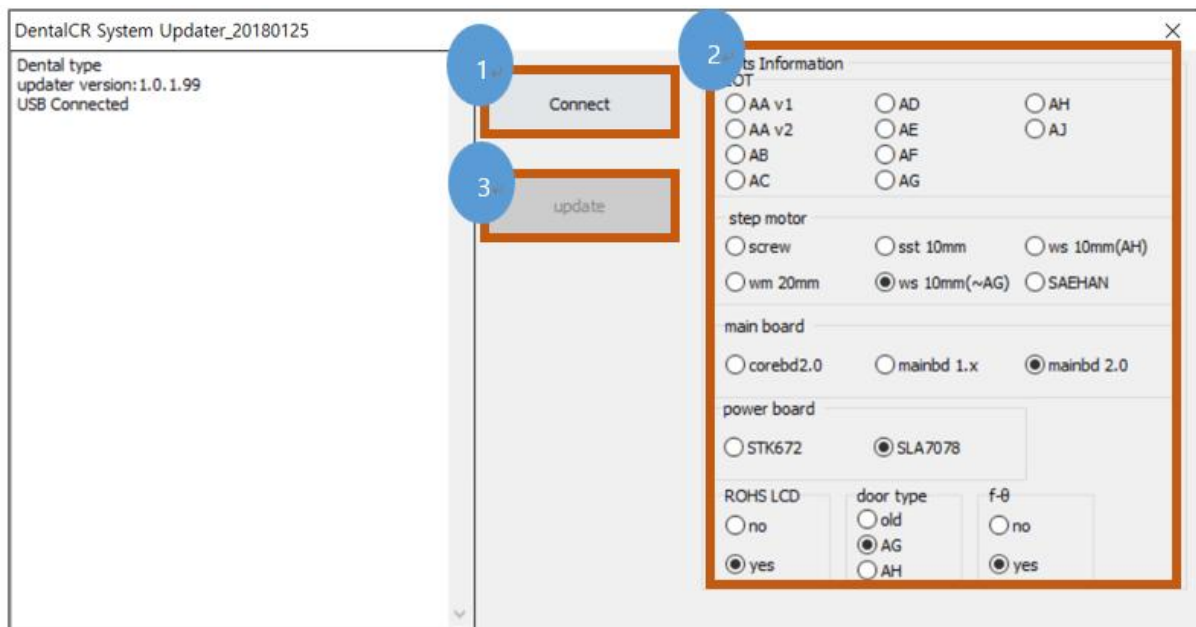
- **Fishbone Diagram**



## Firmware update

The way of firmware update as factory mode

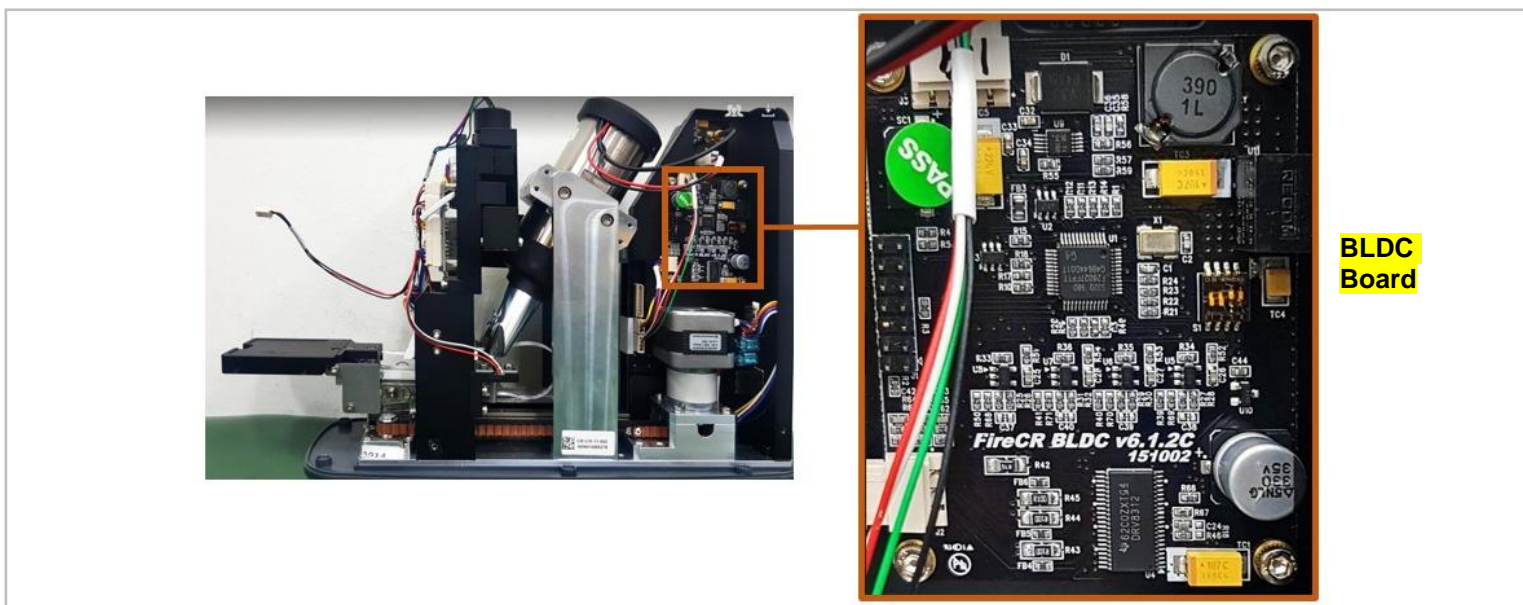
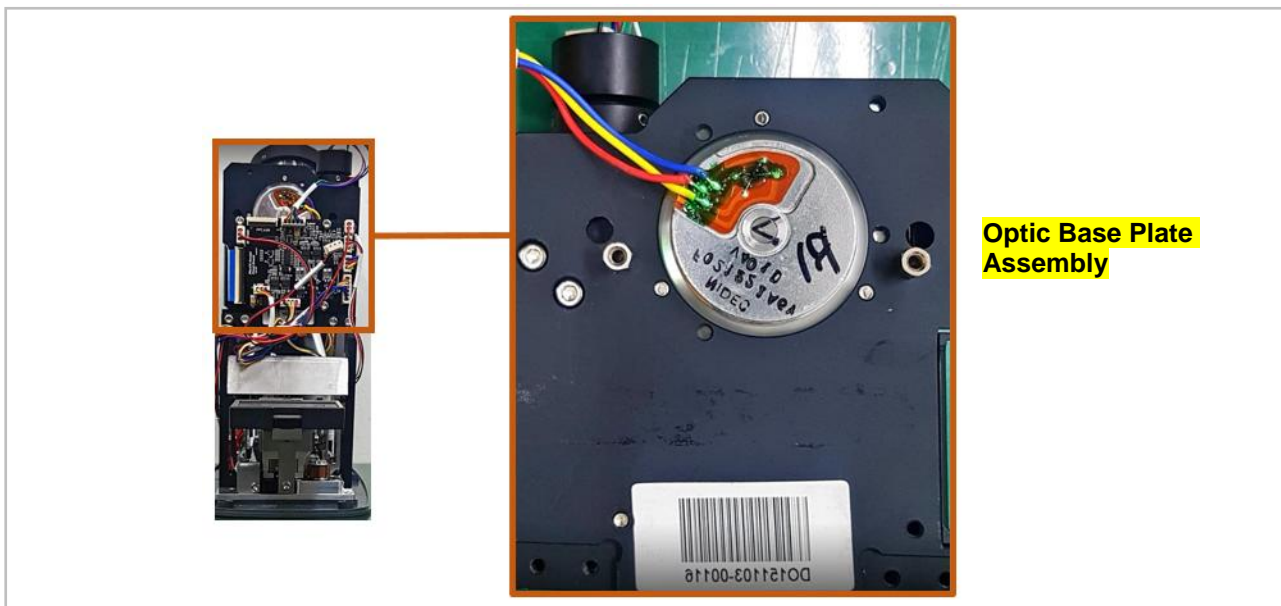
- 1) Add notepad named factory\_mode.txt in the QuantorDent folder.
- 2) Run firmware updater named DentalCR\_SystemUpdater.exe as administrator rights.
- 3) Click Connect
- 4) Check if Lot and each item are properly selected
- 5) Click Update



## RPM out of tolerance

RPM value should be near 2400.

- In case of RPM value 0, need to visually check red laser brightness.
  - Need to replace an Optic base plate assembly.
- In case of unstable RPM, need to visually check if square mirror spins unstable
  - Need to replace a BLDC board



## Square mirror out of alignment

If the square mirror is out of alignment, the regular fine horizontal lines has appeared across the image.

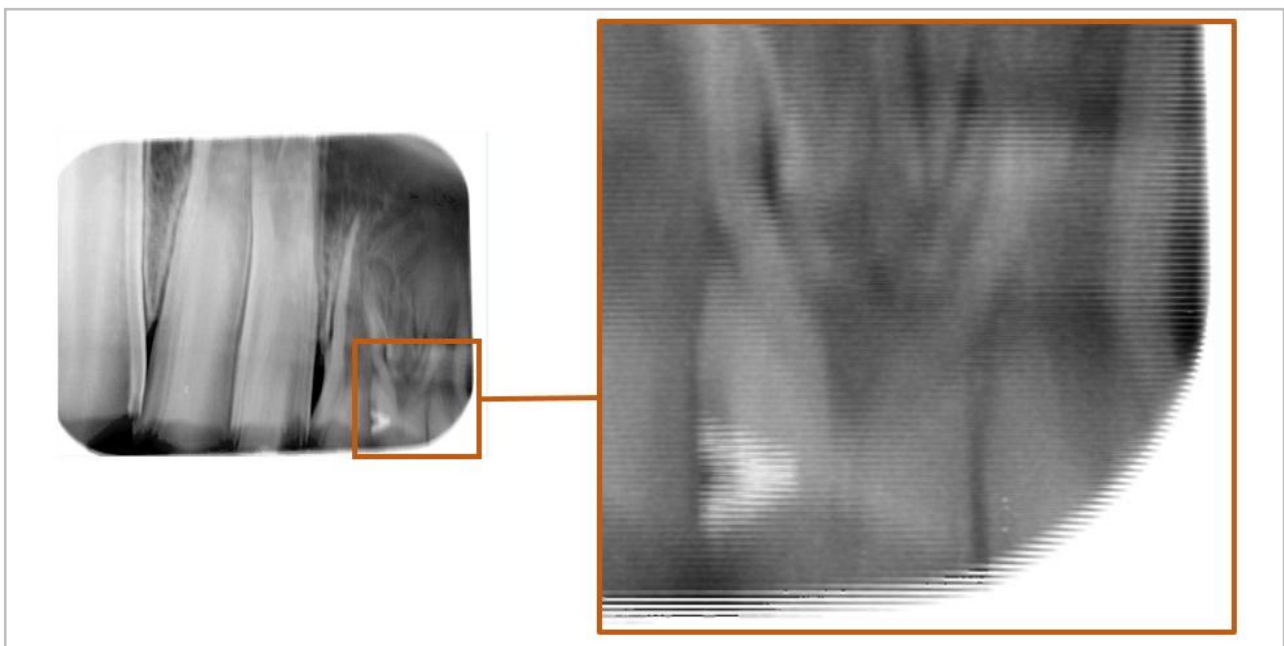
First step is to update the latest QuantorDent with FW.

If it is still persisting with the latest QuantorDent with FW, an optic base plate assembly need to be replaced.

Please find the latest QuantorDent in the following website

[www.digiray.co.kr](http://www.digiray.co.kr)

Partner Area [ ID : Quantor3 / pass: Quantor4! ]



## Jagged image

Update the latest QuantorDent with FW.

If it is still persisting with the latest QuantorDent with FW, a pair of PSDs need to be replaced.

Please find the latest QuantorDent in the following website

[www.digiray.co.kr](http://www.digiray.co.kr)

Partner Area [ ID : Quantor3 / pass: Quantor4! ]

