

- **Model**

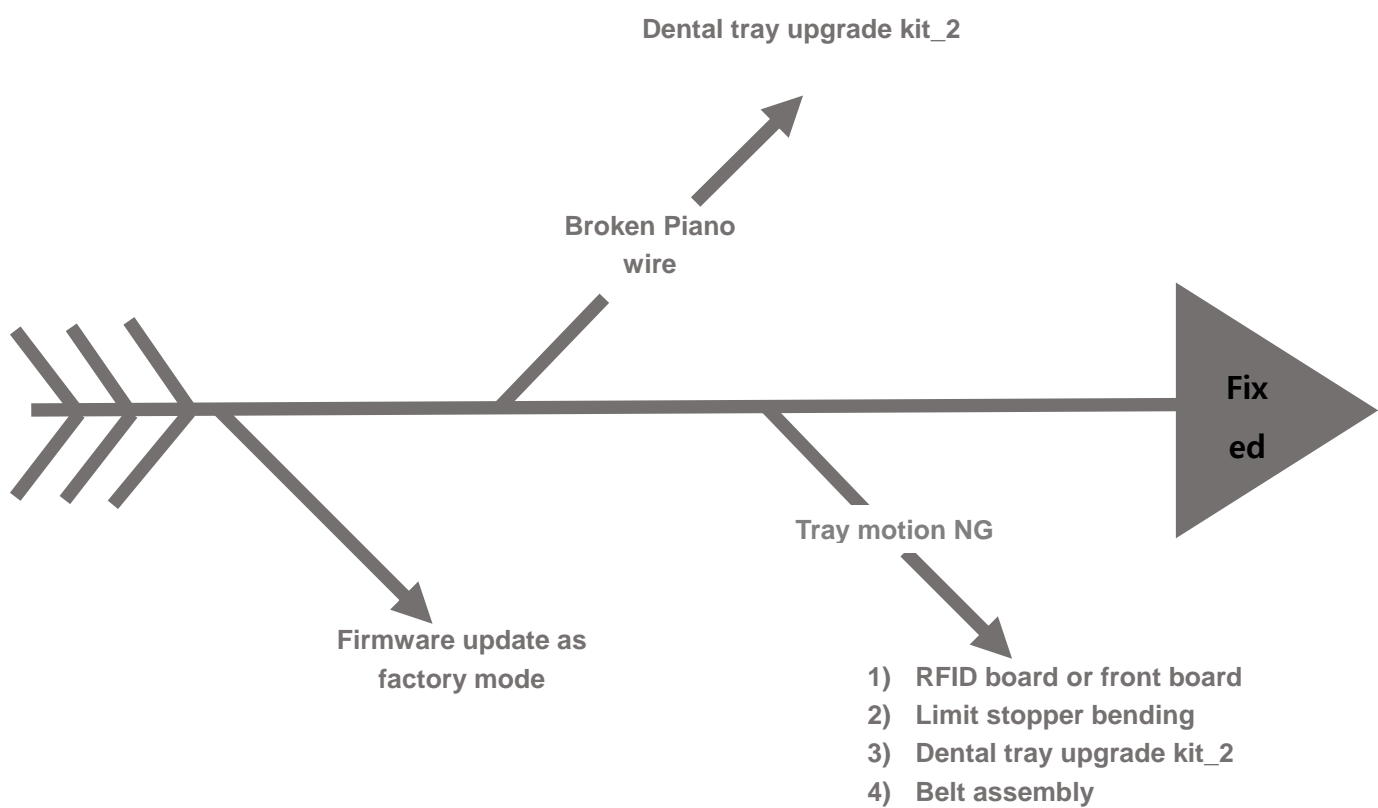
FireCR Dental AH type

FireCR Dental AJ type

- **The Description of the Problem**

Tray assembly motion NG

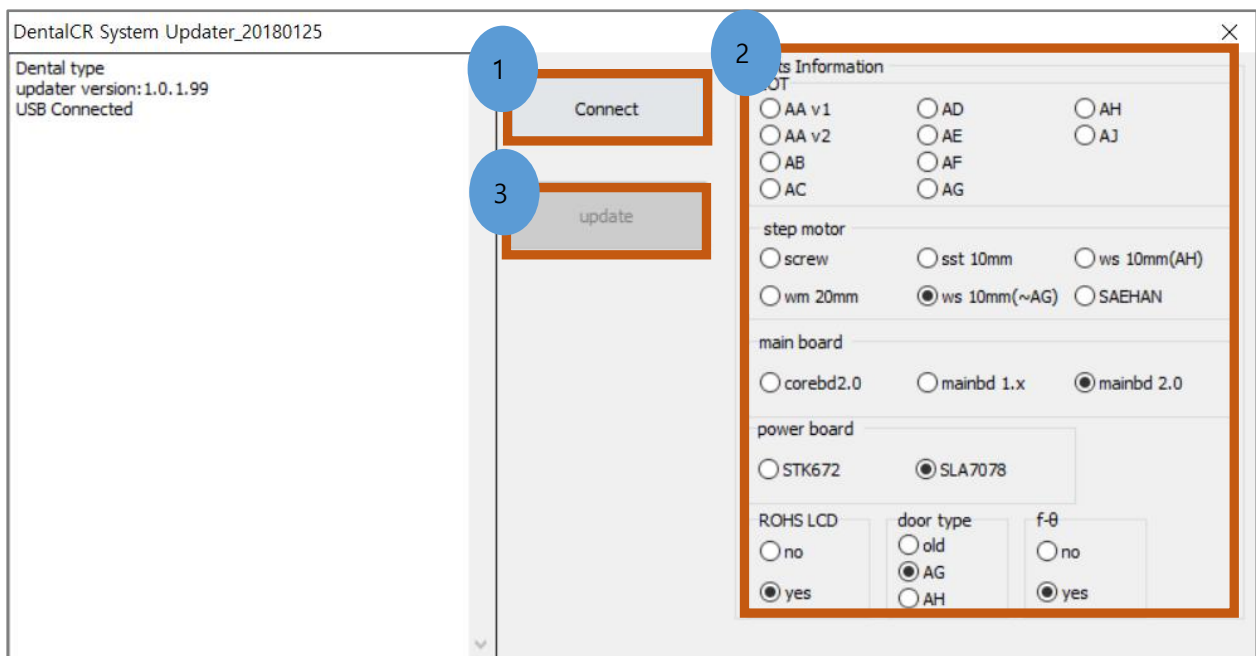
- **Fishbone Diagram**



Firmware update

The way of firmware update as factory mode

- 1) Add notepad named factory_mode.txt in the QuantorDent folder.
- 2) Run firmware updater named DentalCR_SystemUpdater.exe as administrator rights.
- 3) Click Connect
- 4) Check if Lot and each item are properly selected
- 5) Click Update



Broken Piano wire

Install a Dental tray upgrade kit_2.

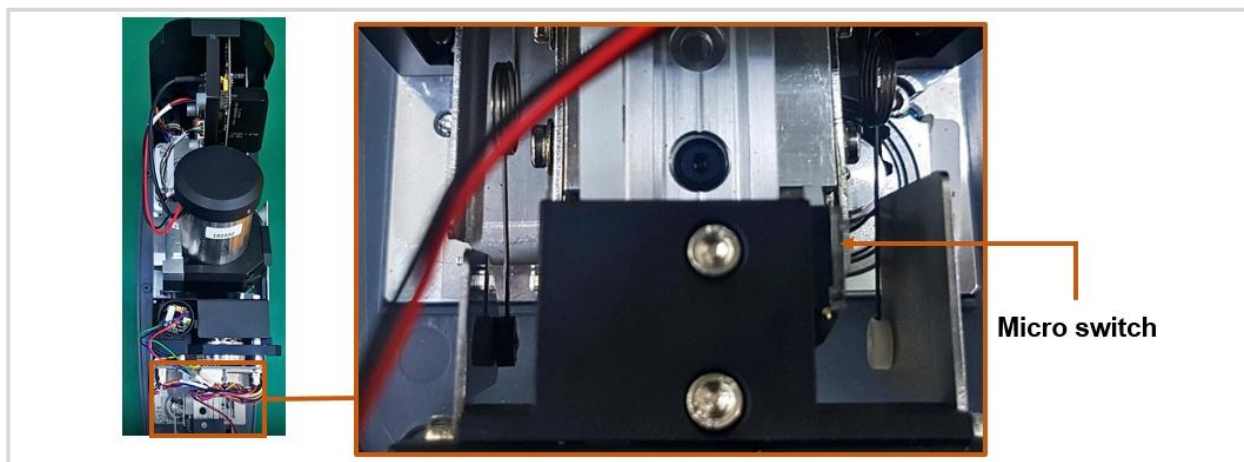
Unit cover ver.	Upgrade kit part image	Upgrade kit part name	Upgrade kit part no.	No	Part name	Qty'
AH		Dental tray upgrade kit_2	CR-CM-11-111	①	Tray sub assy'	1
				②	Ejector guide	1
				③	Tape (3.5cm x 2.5cm)	1

Tray motion NG

Tray stuck during scanning phase.

- 1) Broken micro switch.

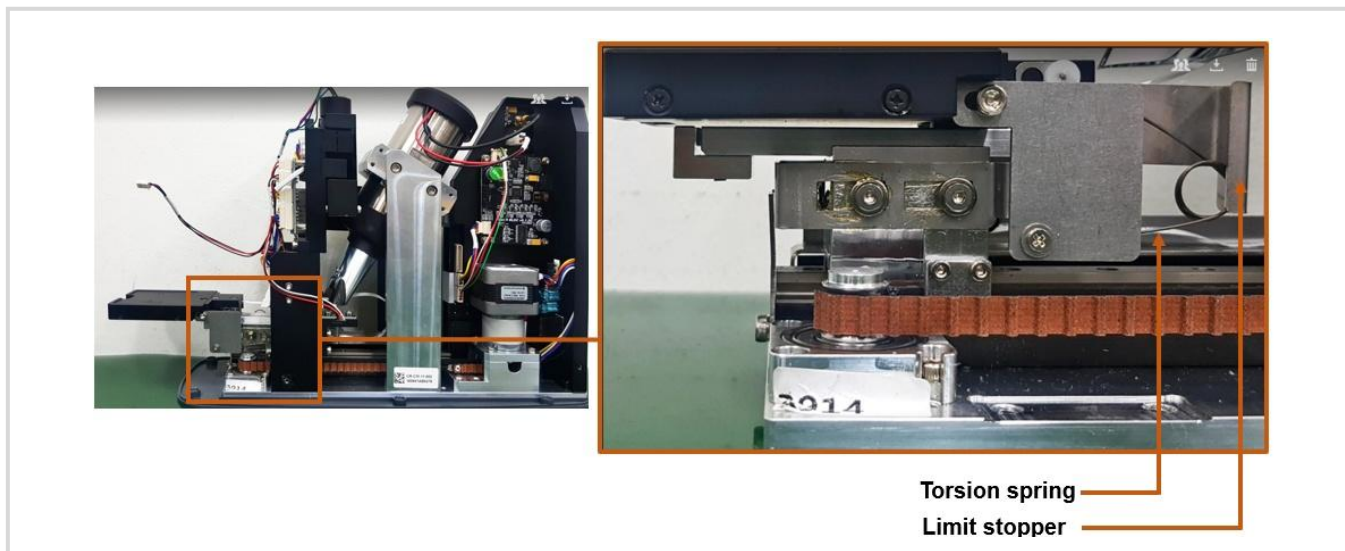
Push a micro switch, a tray moves back and forth a little bit. If a tray does not move at all, a micro switch or a front board should be an issue. A micro switch is the part of the RFID board.



2) Contact between limit stopper and torsion spring

Torsion spring hits a limit stopper when a tray is pushed in. A tray ejects during scanning phase.

In this case, a limit stopper should be bent to avoid contact.



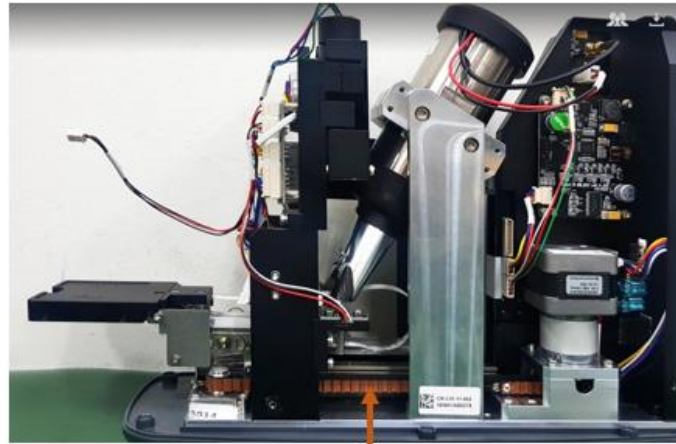
Tray does not eject all the way after scanning / erasing process.

Need to replace a Dental tray upgrade kit_2

Unit cover ver.	Upgrade kit part image	Upgrade kit part name	Upgrade kit part no.	No	Part name	Qty'
AH		Dental tray upgrade kit_2	CR-CM-11-111	①	Tray sub assy'	1
				②	Ejector guide	1
				③	Tape (3.5cm x 2.5cm)	1

Tray does not stop after scanning / erasing process

Replace a belt assembly



Belt assembly