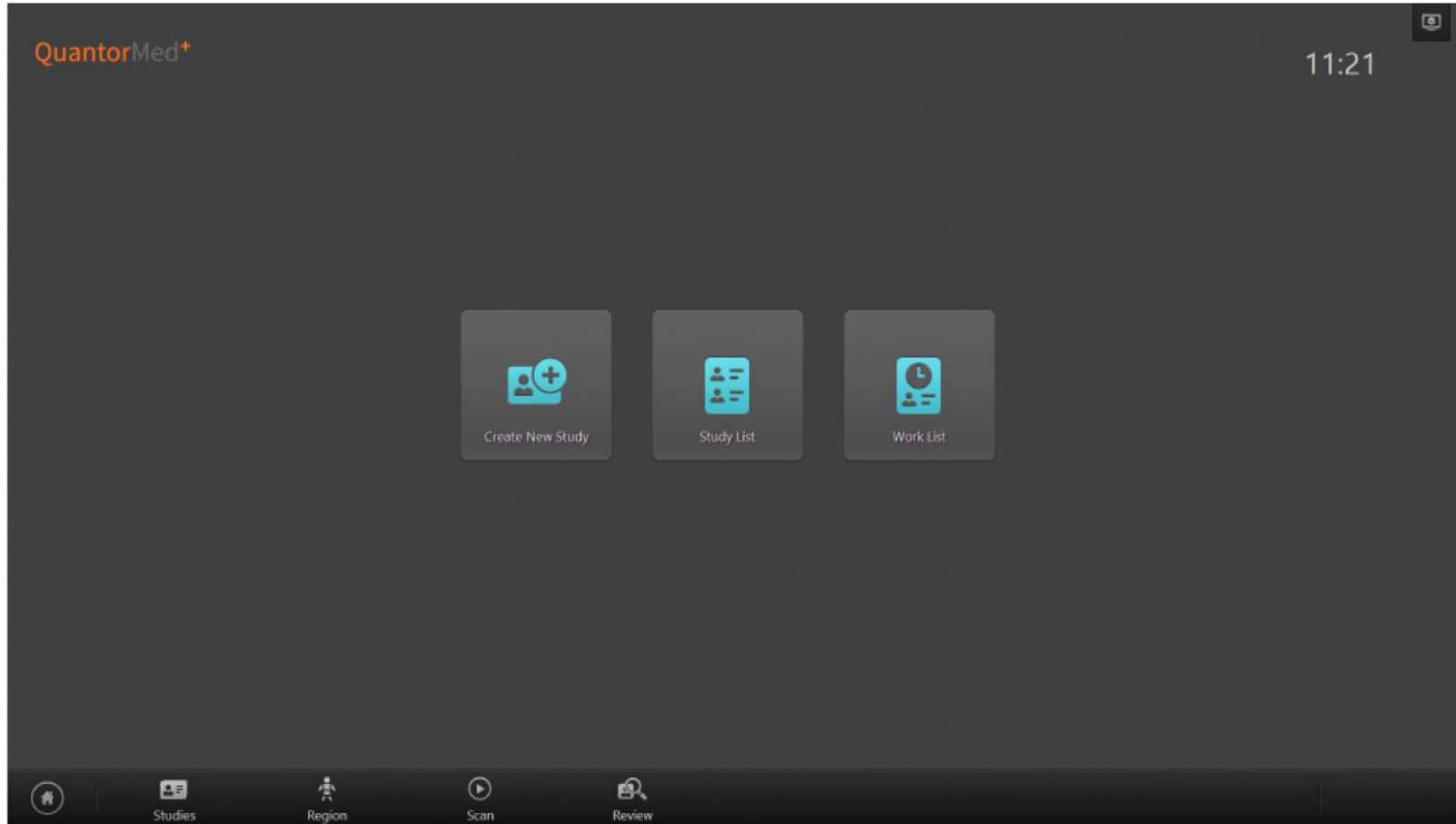


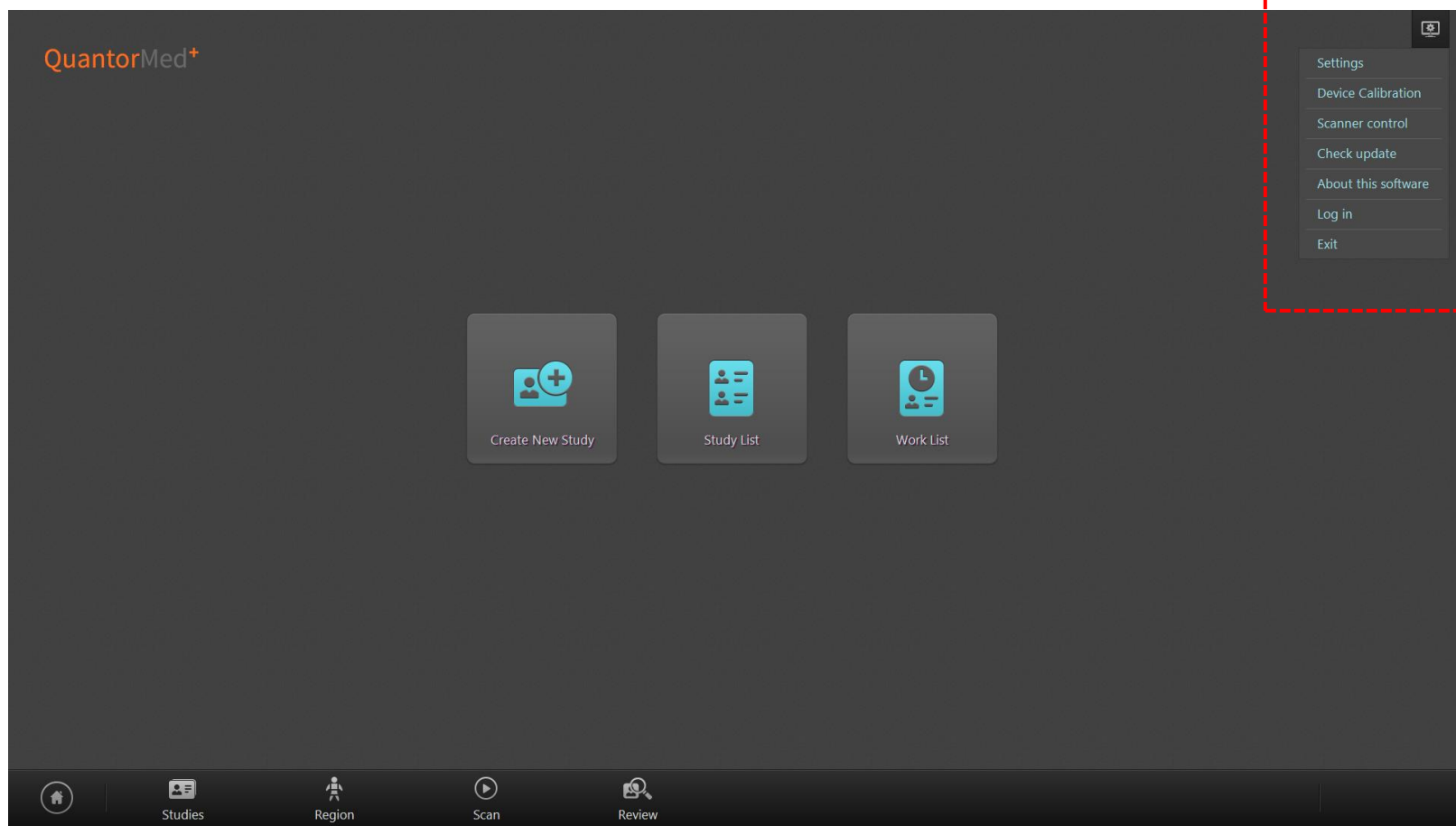
## ❖ PMT gain verification and adjustment

1. Connect the unit to a PC using a USB cable.
2. Switch it on.
3. Open a QuantorMed+ / QuantorVet+.



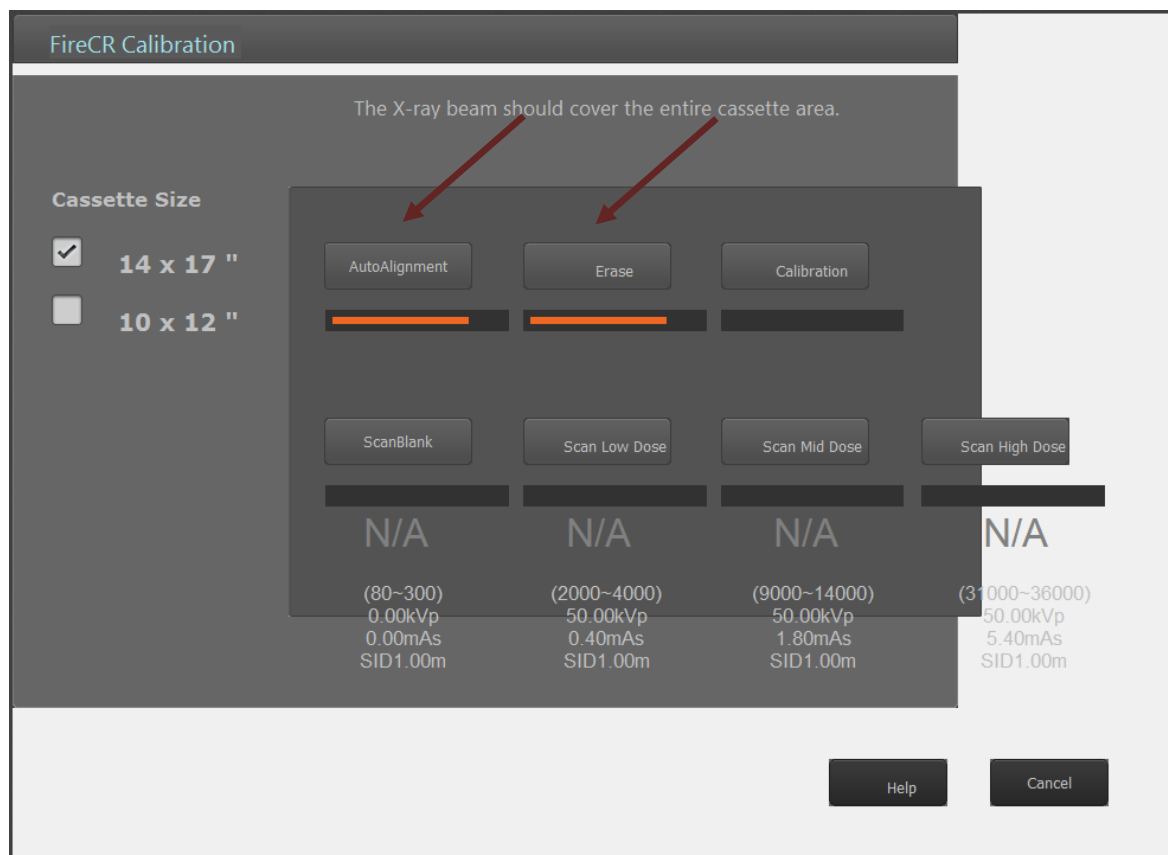
## ❖ PMT gain verification and adjustment

### 4. Open the Device Calibration



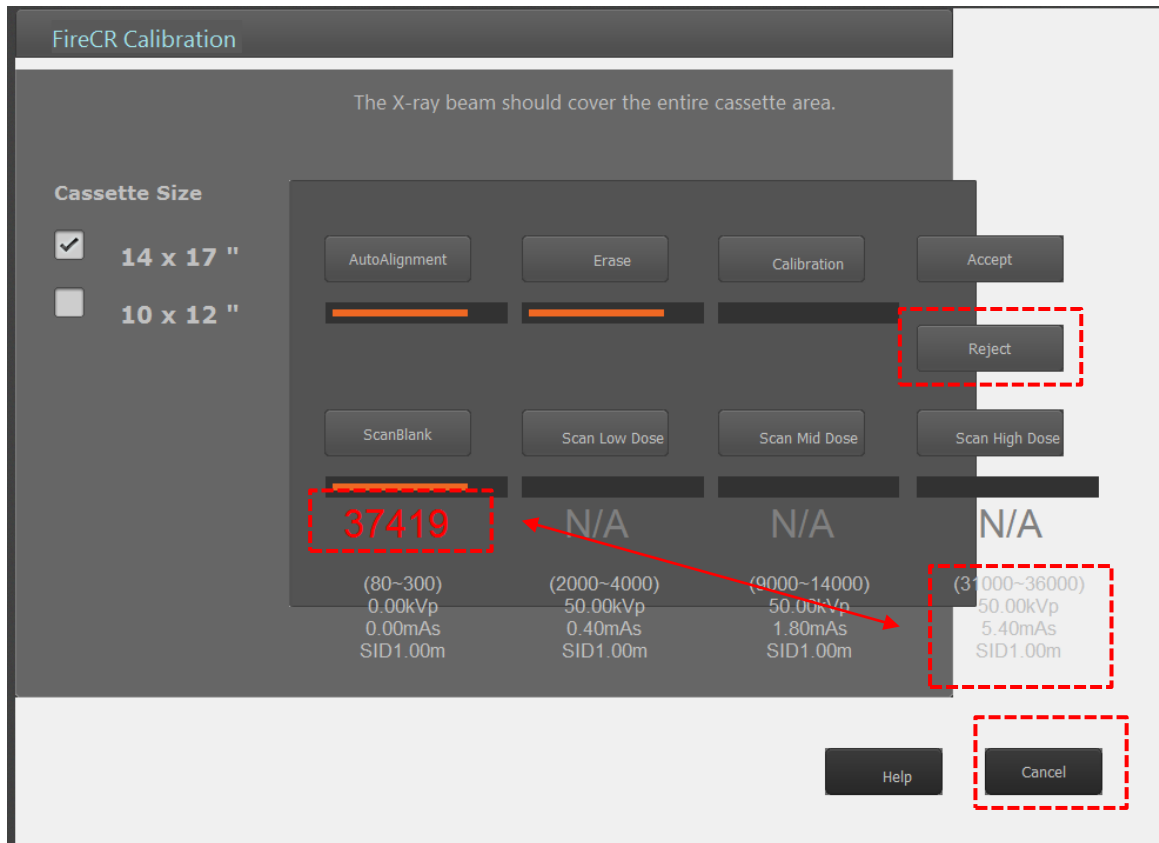
## ❖ PMT gain verification and adjustment

5. Perform the auto alignment process.
6. Insert a large cassette (14" x 17") and then perform the erase process.



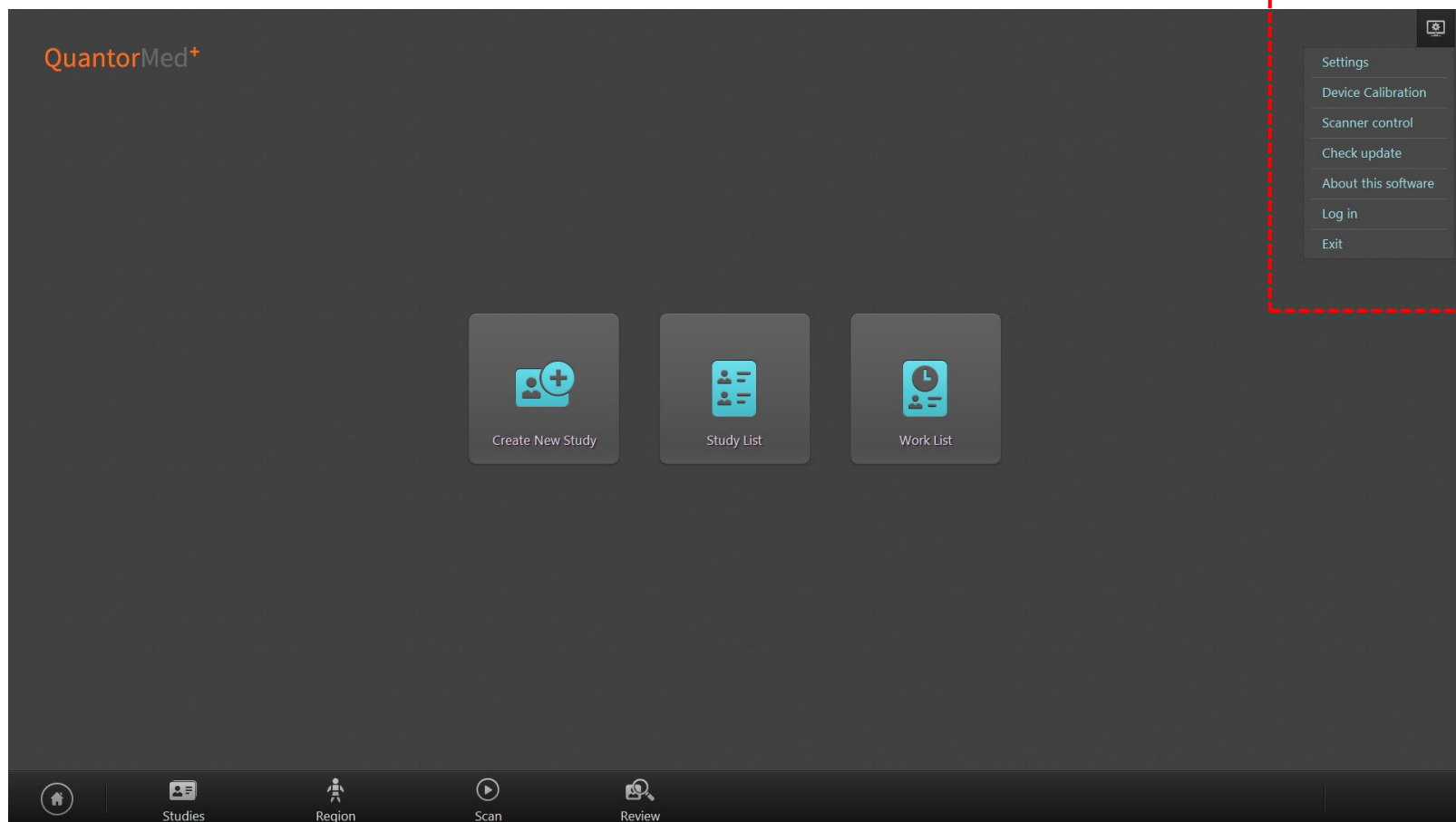
## ❖ PMT gain verification and adjustment

- Expose the cassette with 93 [uGy] and scan it using "ScanBlank".
- Compare the readout value with the tolerance for the ScanHighDose.
- Readout value is within tolerance, continue to do ADC offset verification and adjustment.
- Readout value is out of tolerance, select Reject bottom. Click cancel



## ❖ PMT gain verification and adjustment

### 11. Open Scanner control



## ❖ PMT gain verification and adjustment

12. Adjust Gain value. Increasing gain value results in increasing the readout value for the ScanBlank.

Decreasing gain value results in decreasing the readout value for the ScanBlank.

13. Click “Save Enviroment”.

14. Repeat the procedures until the readout value is within the HighDoseScan tolerance,

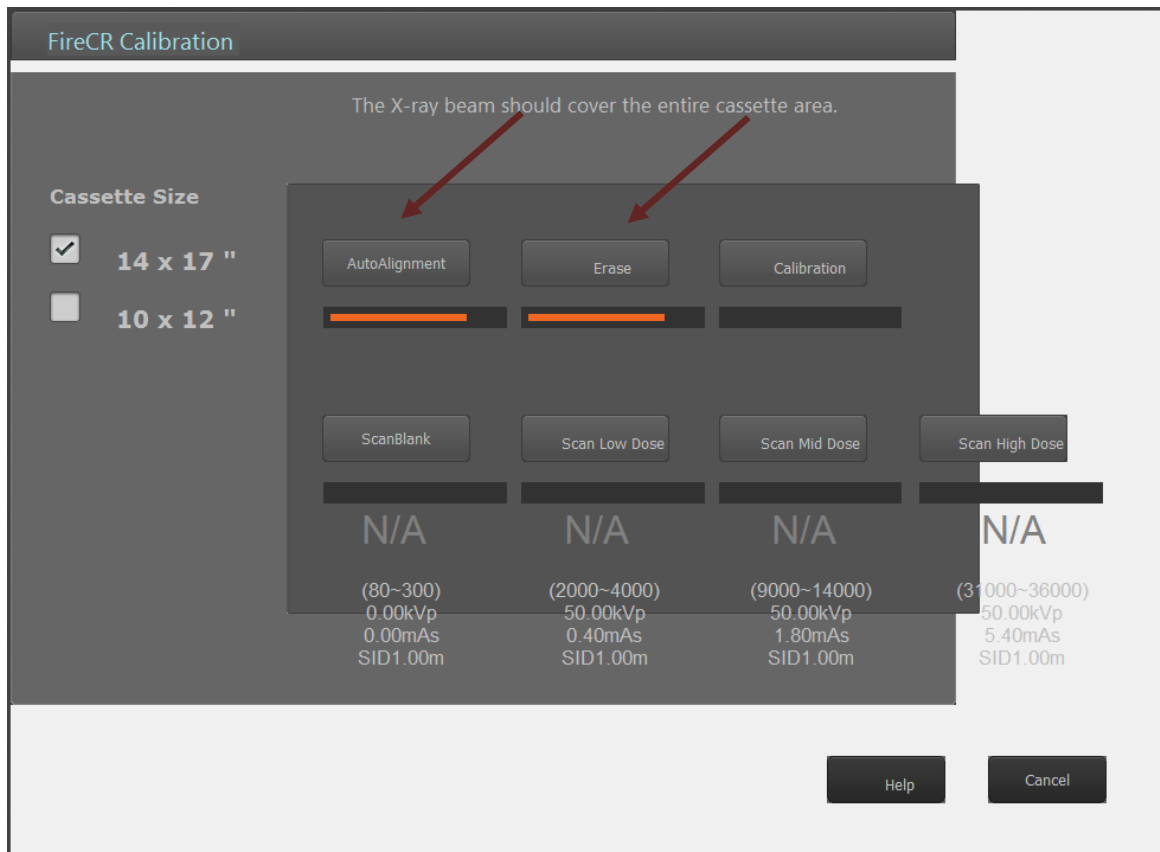
The image shows the QuantorMed+ software interface. The main screen displays three large buttons: "Create New Study", "Study List", and "Work List". At the bottom, there is a navigation bar with icons for Home, Studies, Region, Scan, and Review.

On the right side, a control panel titled "Control 87" is open. It contains various settings and controls:

- Scan**: Power, Erase, Run, Stop buttons. A radio button is selected for "100um", with "200um" also visible.
- Switches**: Laser, Eraser buttons.
- Feeder**: Speed (20000), Length (105700), Current (Δ0), Backward, Stop, Forward buttons.
- Motorize Aligner**: PWM (6000), Length (150), Out(+), Auto, Out(+), In(-), Stop, In(-) buttons.
- GainL**: 64, **GainR**: 59
- Amplifier**: Gain (105), Offset (-25). This section is highlighted with a red dashed box.
- Sub feature**: Show Diagnostics, Save Environment, Installation Report, Remote Support buttons. The "Save Environment" button is also highlighted with a red dashed box.
- At the bottom of the control panel, it says "Scanner Ready".

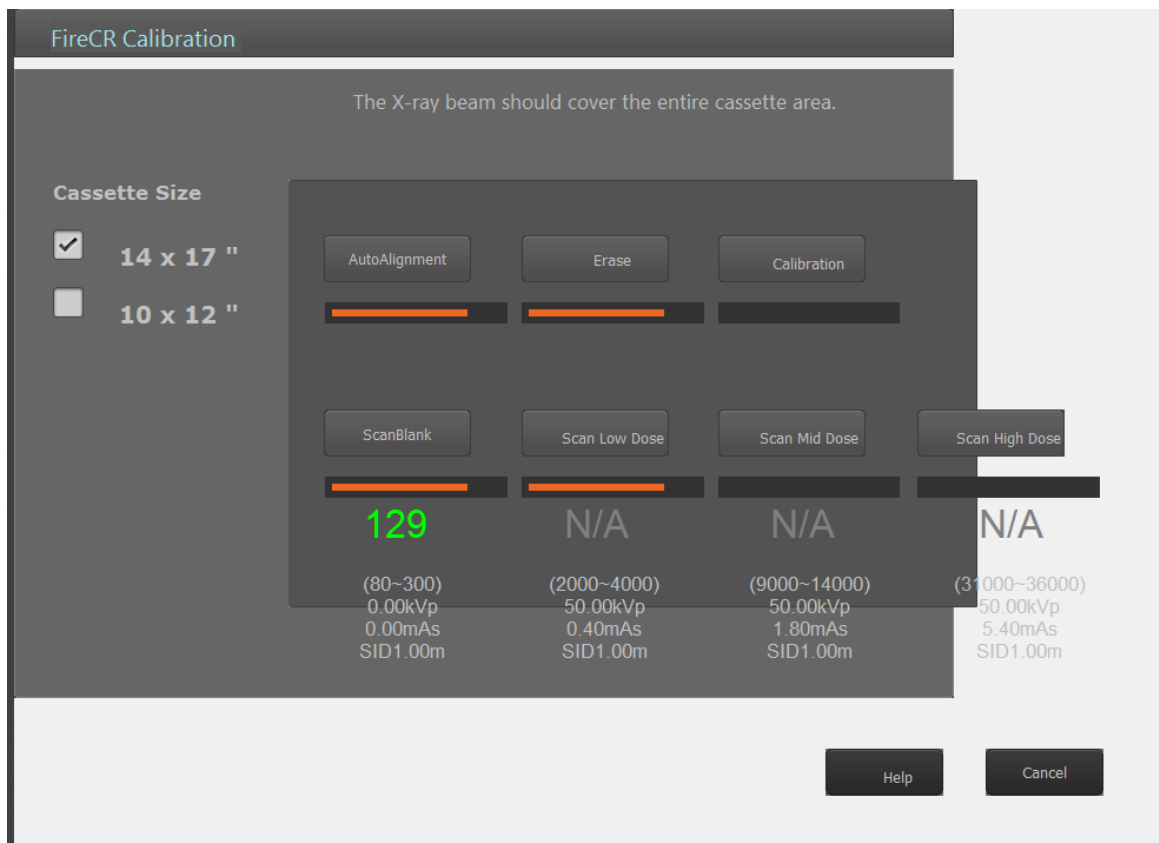
## ❖ ADC offset verification and adjustment

1. Open a QuantorMed+ / QuantorVet+.
2. Open Device Calibration.
3. Perform Autoalignment process.
4. Insert a large cassette (14" x 17") and perform Erase process.
5. Scan it using "ScanBlank" without x-ray.



## ❖ ADC offset verification and adjustment

6. If readout value is within the tolerance for “ScanBlank”, continue to perform the calibration.
7. If readout value is out of tolerance, select reject and click cancel.





## ❖ ADC offset verification and adjustment

8. Open Scanner control

9. Adjust Offset value. Increasing offset value results in increasing the readout value for the ScanBlank.

Decreasing gain value results in decreasing the readout value for the ScanBlank.

10. Click Save Environment.

11. Repeat the procedures until readout value is within tolerance for ScanBlank.

QuantorMed+

Create New Study Study List Work List

Control 87

Scan

Power Erase

Run Stop

100um 200um

Switches

Laser Eraser

Feeder

Speed 20000 Length 105700

Current Δ0 Δ0

Backward Stop Forward

Motorize Aligner

PWM 6000 Length 150

Out(+) Auto Out(+)

In(-) Stop In(-)

GainL 64 GainR 59

Amplifier

Gain 105 Offset -25

Sub feature

Show Diagnostics

Save Environment

Installation Report

Remote Support

Scanner Ready

Home Studies Region Scan Review