

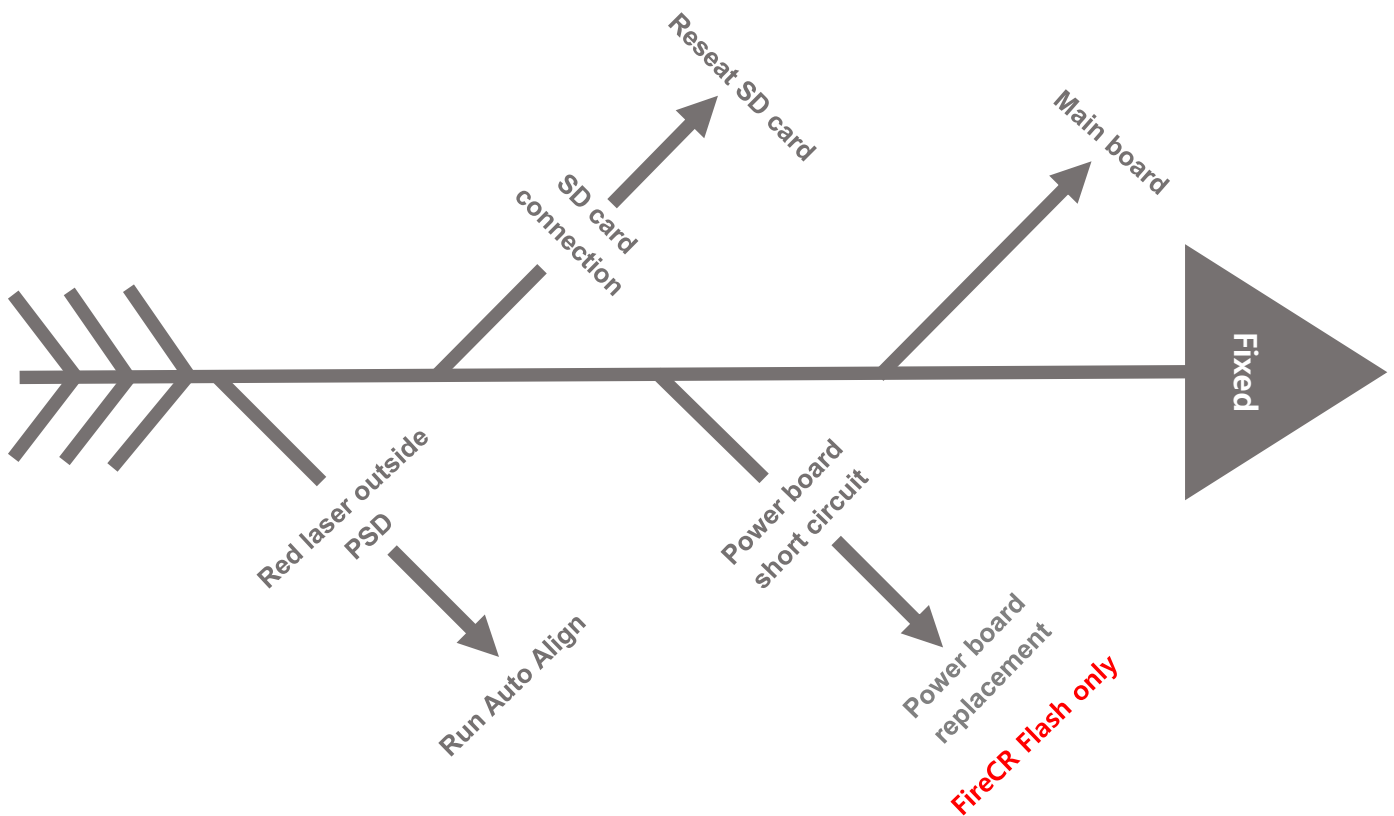
- **Model**

FireCR Flash AA
FireCR Flash AB
FireCR Flash AC
FireCR Flash AD / FireCR Spark

- **The Description of the Problem**

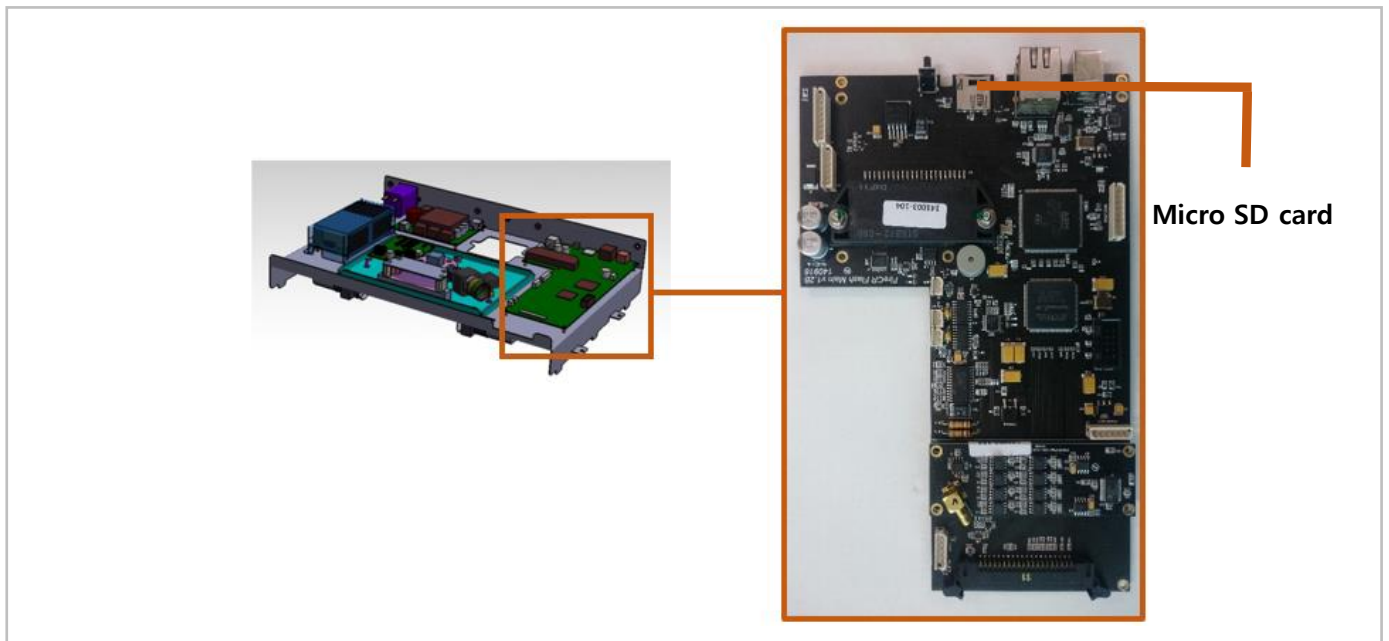
Booting failure, no frond led, no red laser and square mirror spinning

- **Fishbone Diagram**

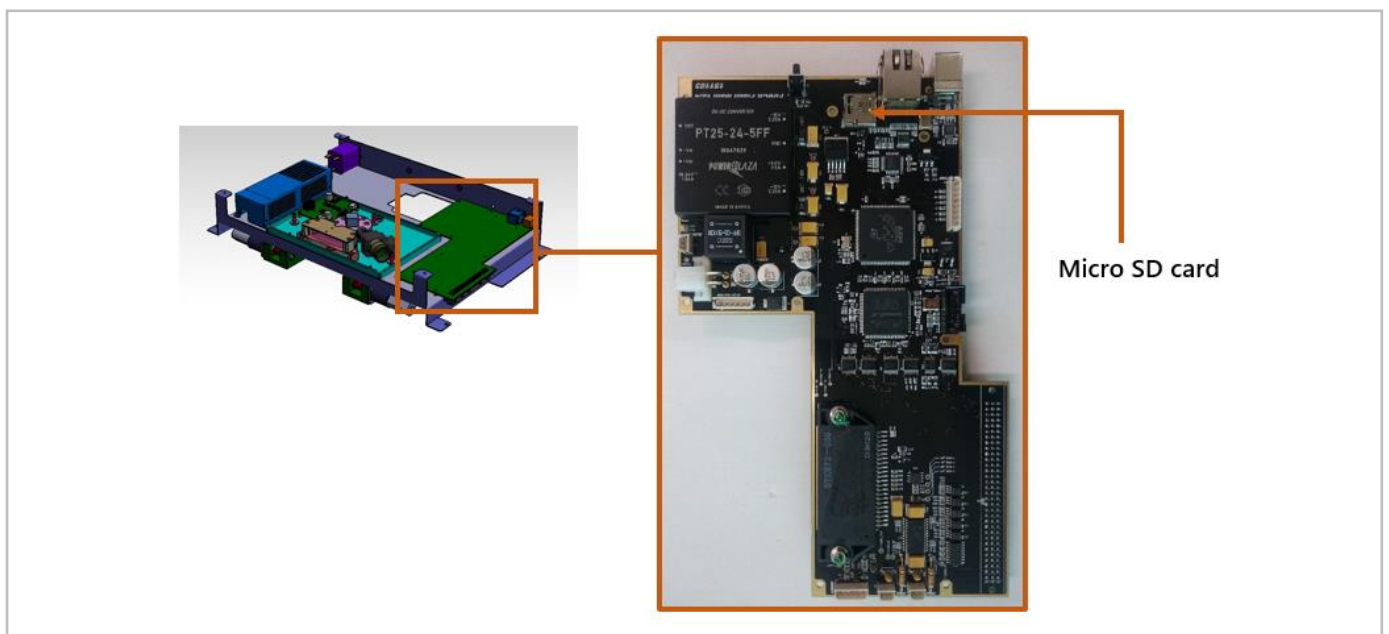


SD card reconnection

FireCR Flash Micro SD card

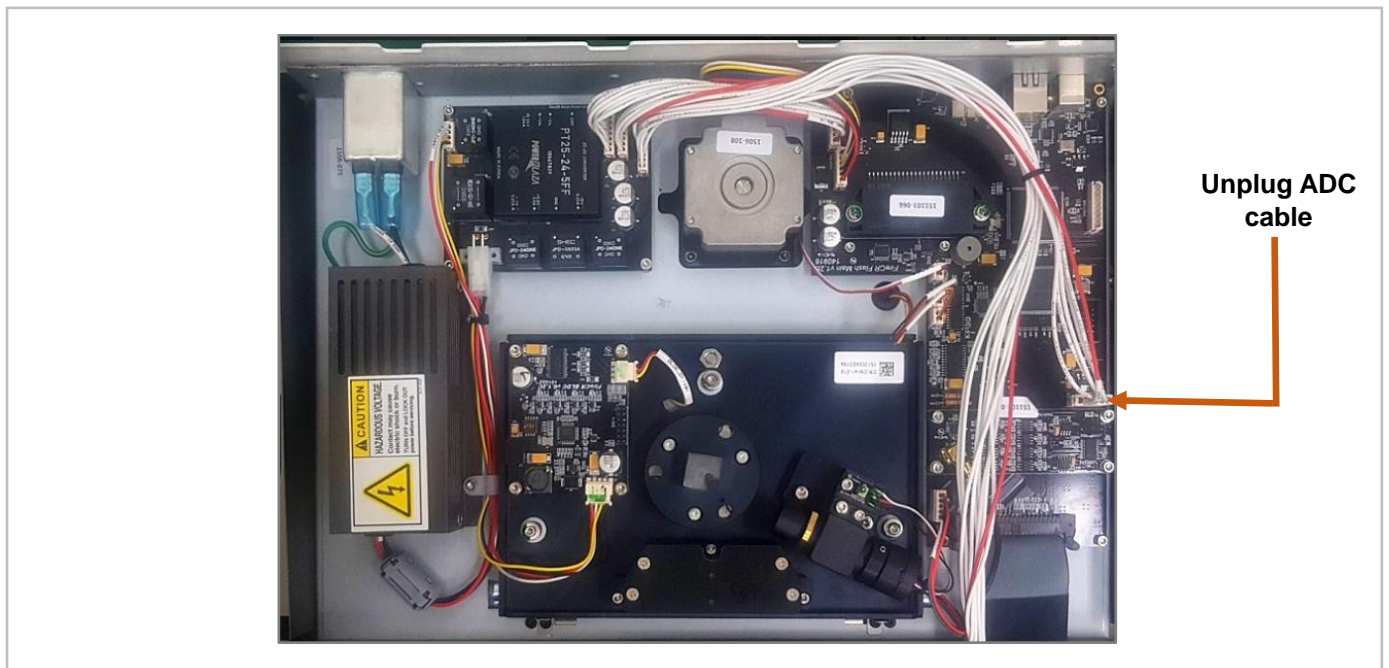


FireCR Spark Micro SD card



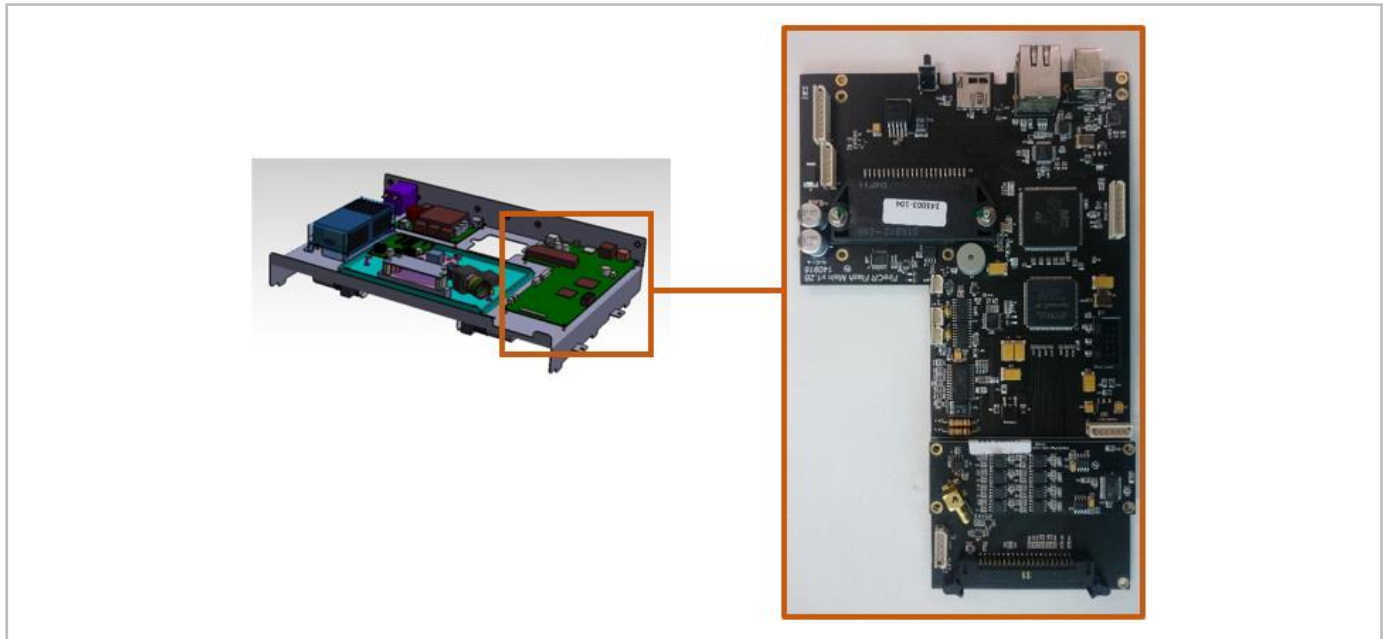
Power board short circuit (FireCR Flash only)

- 1) Turn off scanner
- 2) Unplug an ADC cable on a main board
- 3) Turn on power
- 4) If booting process succeeds, the power board should be an issue.



Main board

Please refer to the FireCR Flash Service manual for main board replacement.



Please refer to the FireCR Spark manual for main board replacement.

