

# FireCR flash

## ***FireKit* (RFID Speed Tag) Attachment Guide**

**Doc No. : TM-406-EN**

**Rev 1.2.1 Nov 2014**

**Part No. : CR-FPM-44-006-EN**

*Digiray*, *FireCR*, *Quantor* are trademarks of *Digiray Corp*, South Korea, and its affiliates. All other trademarks are held by their respective owners and are used in an editorial fashion with no intention of infringement. The data in this publication are for illustration purposes only and do not necessarily represent standards or specifications, which must be met by *Digiray Corp*. All information contained herein is intended for guidance purposes only, and characteristics of the products and services described in this publication can be changed at any time without notice. Products and services may not be available in your local area. Please contact your local sales representative for availability information. *Digiray Corp*. strives to provide as accurate information as possible, but shall not be responsible for any typographical error.

© Copyright 2019 *Digiray Corp*. All rights reserved.

**DIGIRAY**

**Contact**



Digiray Corp.  
#825, Unitech Venture Town, 142, Ilsan-ro,  
Ilsandong-gu, Goyang-si, Gyeonggi-do,  
10442 Republic of Korea

Tel : +82-31-932-8401

Fax : +82-31-927-9988

Website : [www.digiray.co.kr](http://www.digiray.co.kr)

E-mail : [sales1@digiray.co.kr](mailto:sales1@digiray.co.kr)

## Warnings and Used Symbols

To ensure the safety of patients, staff and other persons, any changes to software and hardware delivered by **Digiray Corp.** may only be made with prior written permission from **Digiray Corp.**

Please read the respective manuals of the connected software, such as acquisition and diagnostic software, before starting to use the system.

The following symbols will be used throughout this manual:



### **DANGER**

General prohibition indication.

The functionality of the system can be destroyed in the case of incorrect use.

If unauthorized changes have been made to delivered system and accessories, the warranty by **Digiray Corp.** becomes void.

**Digiray Corp.** will not accept any responsibility or liability for the proper functioning of the product in such a case.



### **DANGER**

General mandatory action manual.

The functionality of the system can be destroyed in the case of incorrect use.

If unauthorized changes have been made to delivered system and accessories, the warranty by **Digiray Corp.** becomes void.

**Digiray Corp.** will not accept any responsibility or liability for the improper functioning of the product in such a case.



### **WARNING**

The functionality of the system can be limited in the case of incorrect use. Hints that require special attention.



### **NOTE**

Notes represent information that is important to know but which do not affect the functionality of the system.

## **General Safety Guidelines**

All the safety and operating instructions should be read carefully before this device is operated.

This device has been designed and tested to meet strict safety requirements applicable to medical equipment, and has been supplied in a safe condition. To ensure personnel and patient safety, the device shall be operated and serviced in compliance with all procedures, warnings and precautions during all phases of operation and service of this device. Failure to comply to with safety guidelines may result in injury to service personnel, operator, or patient. **Digiray Corp.** assumes no liability for failure to comply.

If this device is not used as specified, the protection provided by the device could be impaired. This device must be used in a normal condition only.

Installation, service and operation of this device should only be undertaken by qualified trained personnel. The operator should study instructions and precautions carefully before starting to use the device listed here and throughout the manual.

There are no user serviceable parts inside this device. The device should only be opened and serviced by qualified service personnel. Failure to heed this warning may result in injury to service personnel or damage to equipment, and void any and all warranties. If there is a service problem, please contact **Digiray Corp.** or authorized dealer.

Do not spill liquids on the device, and never operate the device in a wet environment.

Keep the device from radiators and heat sources.

Use the device only with accessories supplied with this device.

This device is intended to be grounded. Plug power cord into properly grounded electrical outlets. This cord is equipped with three-prong plugs to help ensure proper grounding.

This device contains static sensitive components. Proper static handling procedures and equipment must be used when servicing this device.

Do not look inside of the device.

If any of the following conditions occur, unplug the device from the electrical outlet and contact authorized service personnel.

- ✓ The power cord or power adapter is damaged.
- ✓ An object has fallen into the device.
- ✓ The device has been exposed to water.
- ✓ The device has been dropped or damaged.
- ✓ The device does not operate correctly when the operating instructions are followed.

## 1. FireKit (RFID Speed Tag) Plate

**FireKits** attached to the plate distinguishes the model of **FireCR Flash** and enables optional software function.



**FireKit** Plate



### **WARNING**

**FireCR Flash** only works with **FireKit** plate attachment.

Attach the **FireKit** plate before operating the **FireCR Flash** as shown below. **FireKit** plate can be easily attached and removed by magnetic.



**FireKit** Plate Attachment

## 2. FireKit Type

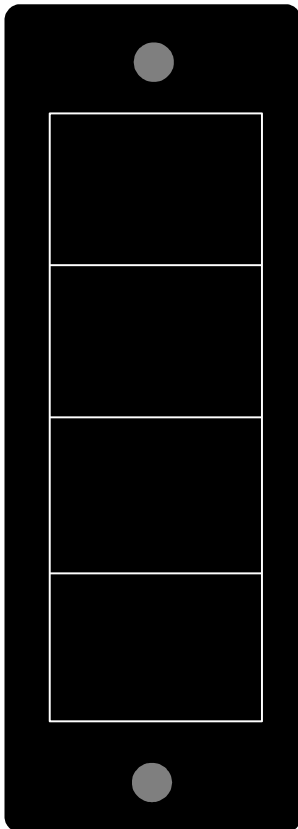
### 2.1. FireKit

Number of attached **FireKit** distinguishes model of **FireCR Flash**, representing below.

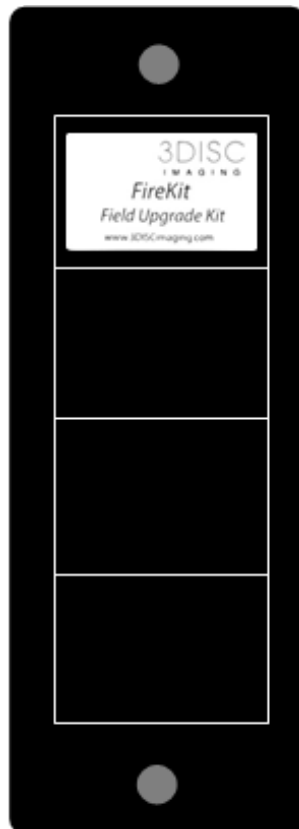
Model	Number of <b>FireKit</b>
<b>FireCR Flash 30</b>	0 ea Attached
<b>FireCR Flash 50</b>	1 ea Attached
<b>FireCR Flash 70</b>	2 ea Attached



**FireKit** RFID Speed Tag



**FireCR Flash 30 FireKit** Plate



**FireCR Flash 50 FireKit** Plate

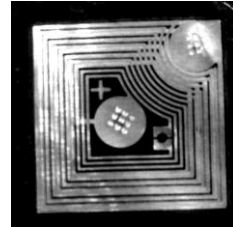


**FireCR Flash 70 FireKit** Plate

### 3. *FireKit* Attachment



Front Side of *FireKit*

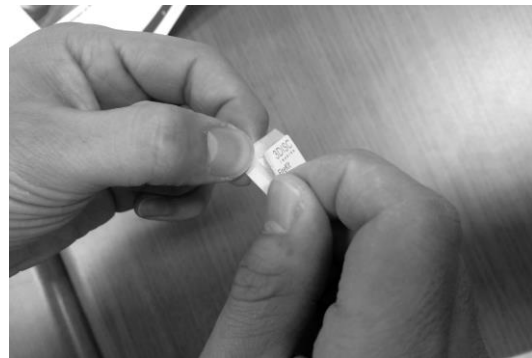


Back Side of *FireKit*

Peel off the paper on back side of the *FireKit*, and attach it to the *FireKit* Plate in position carefully, through steps described below.



Preparation of *FireKit*



Peeling off of the Protective Paper



Attachment of *FireKit*



Attachment of *FireKit*



**WARNING**

As *FireKit* is highly sensitive, we strongly recommend that peel off the paper on back side of the *FireKit* and treat it with special care.

Do not bend *FireKit*, it will cause severe damage to *FireKit*.

Do not touch the back side of the *FireKit*.