

❖ Front Cover Removal

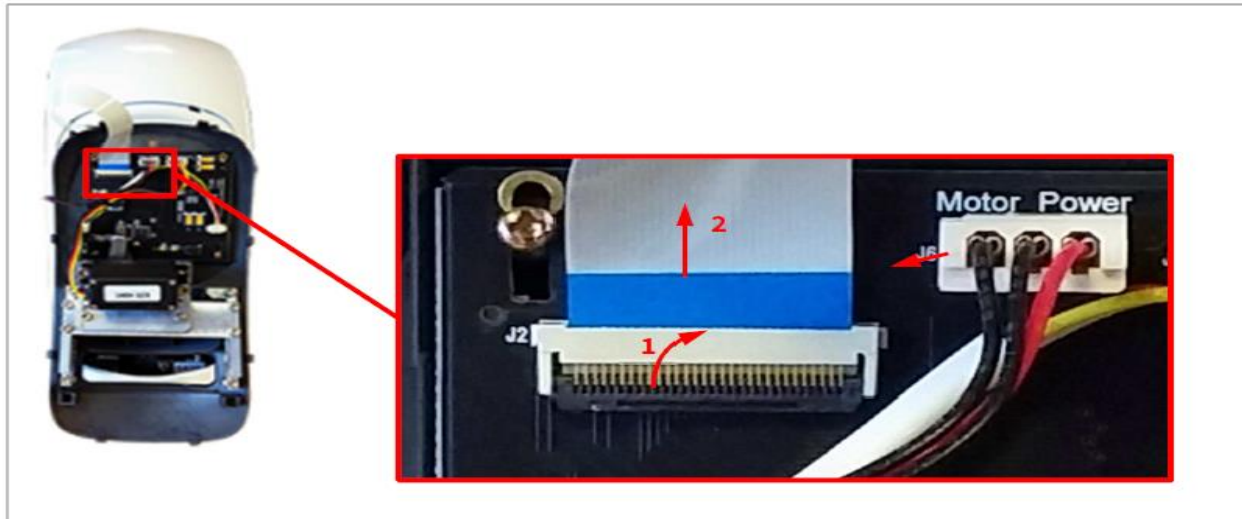
1. Start by putting the scanner into “sleep mode”



2. Turn off power switch and unplug all cables.
3. Push the door inwards and upwards to gain a decent handhold on the inside of the front cover, then pull outwards to remove the front cover from the rest of the unit.

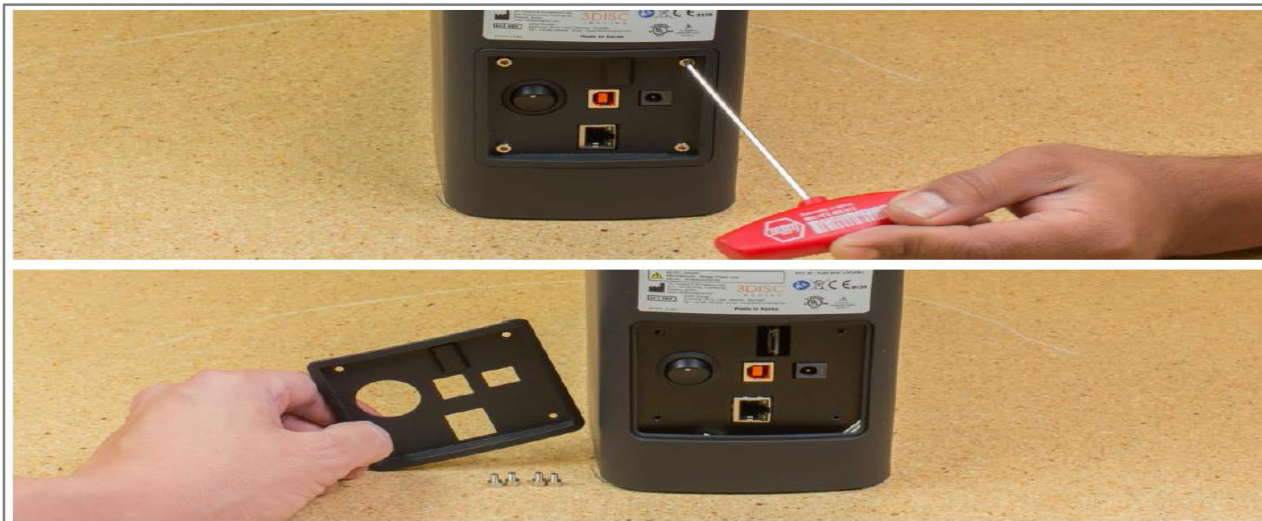


4. Once the front cover is loose, turn the front cover over to gain access to the cables.
Tip the lock of the ribbon cable and unplug it from the PCB, then unplug the motor power cable from the display PCB



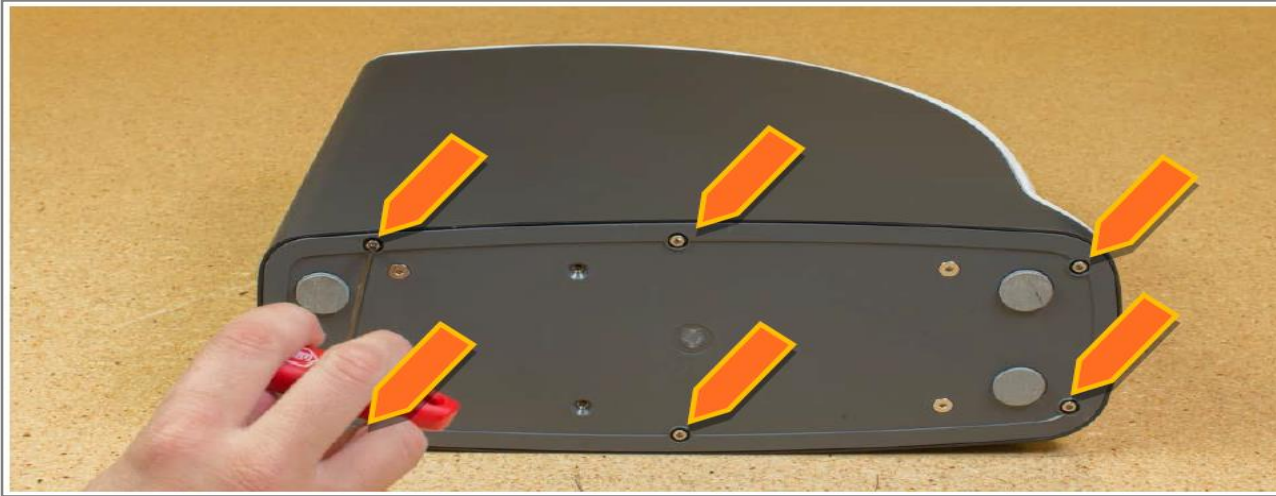
❖ Back Cover

1. Remove the 4 hex screws (2.5 mm)



❖ Top Cover

1. Turn the reader to its side and remove the 6 screws (2.5 mm hex) on the bottom cover.

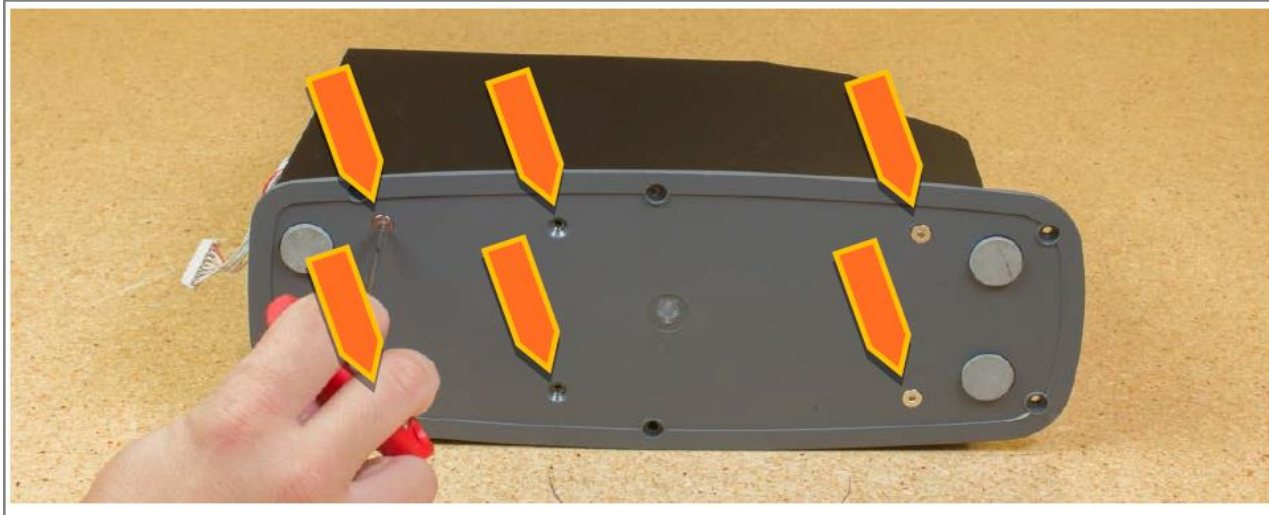


2. Lift and remove cover.



❖ Bottom Cover

1. Turn the reader to its side and remove the 6 screws (2.5 mm hex) on the bottom cover.

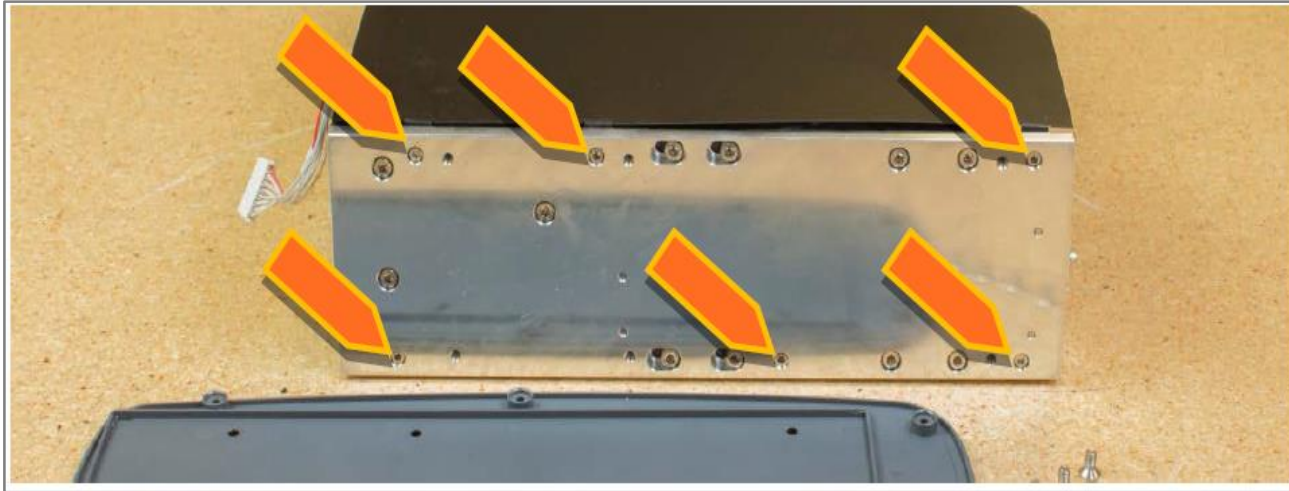


2. Remove plate.



❖ Internal Chassis Cover

1. Remove the 6 screws (2.5mm hex) on the base plate.

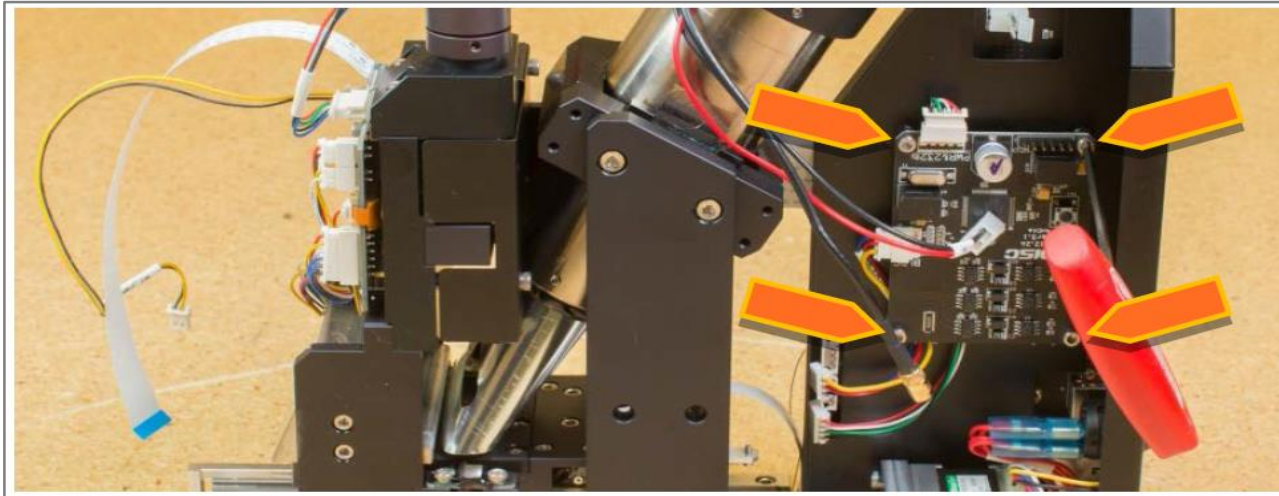


2. Lift and remove inner cover.



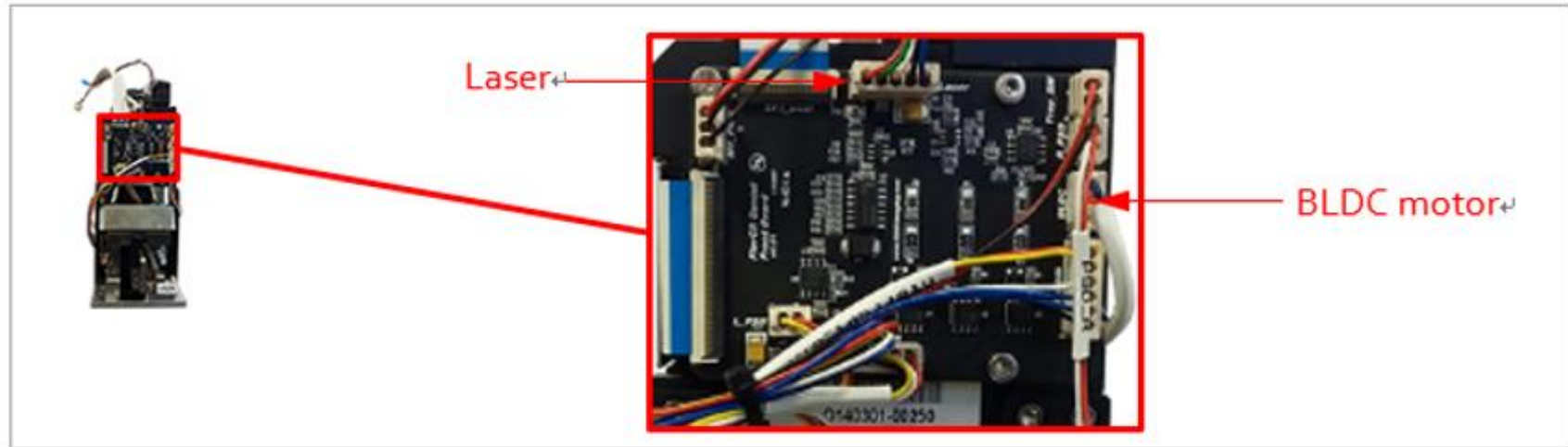
❖ BLDC Board

1. Refer to cover removals.
2. Unplug all connectors.
3. Remove the 4 screws (2.4mm hex)
4. Replace BLDC driver board.

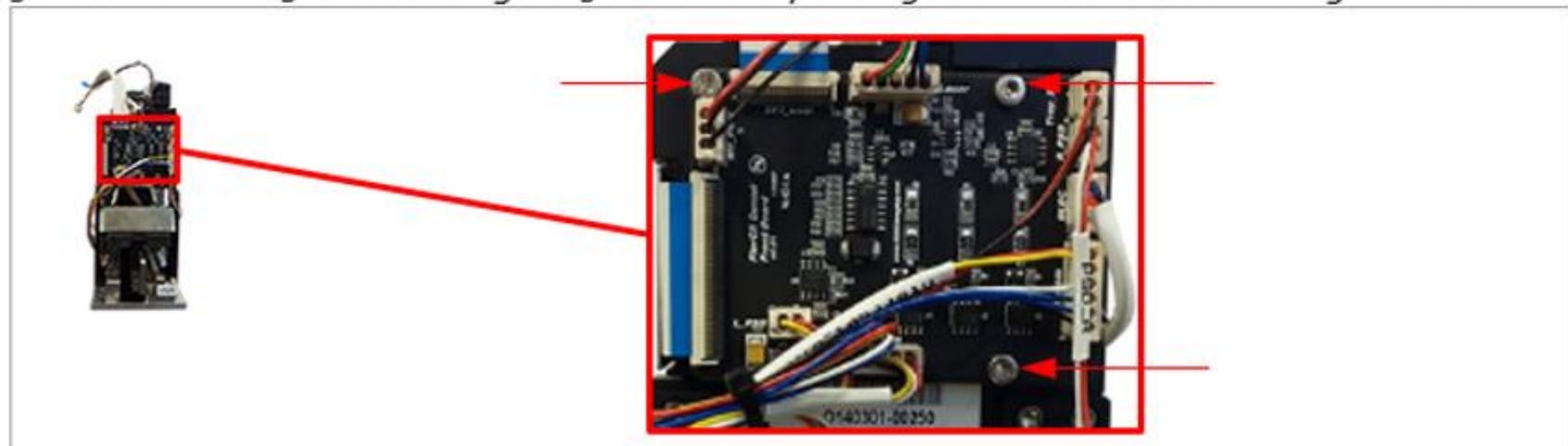


❖ Laser module (= Optic Plate)

1. Follow step 1 through 11 of Disassembly.
2. Disconnect the BLDC motor and laser from the front board PCB.

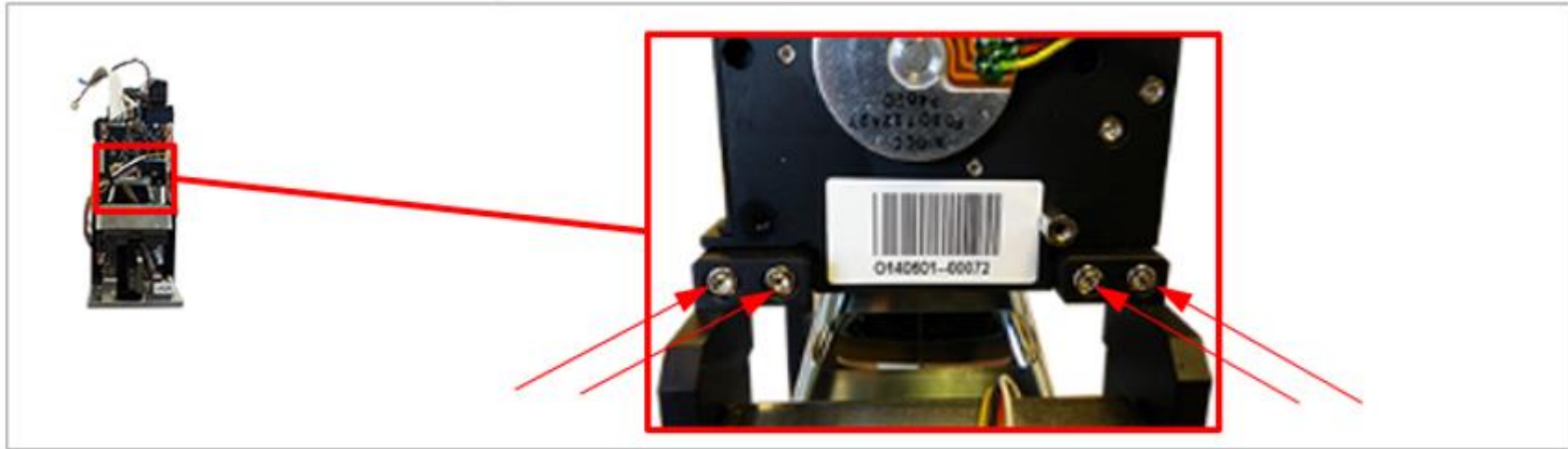


3. Remove the 3 screws using a 2.5 mm hex key letting the front board PCB hang loose.



❖ Laser module(= Optic Plate)

4. Remove the 4 screws using a 2.5 mm hex key.



5. Replace the laser module and install in reverse order.