

RFID Board Replacement

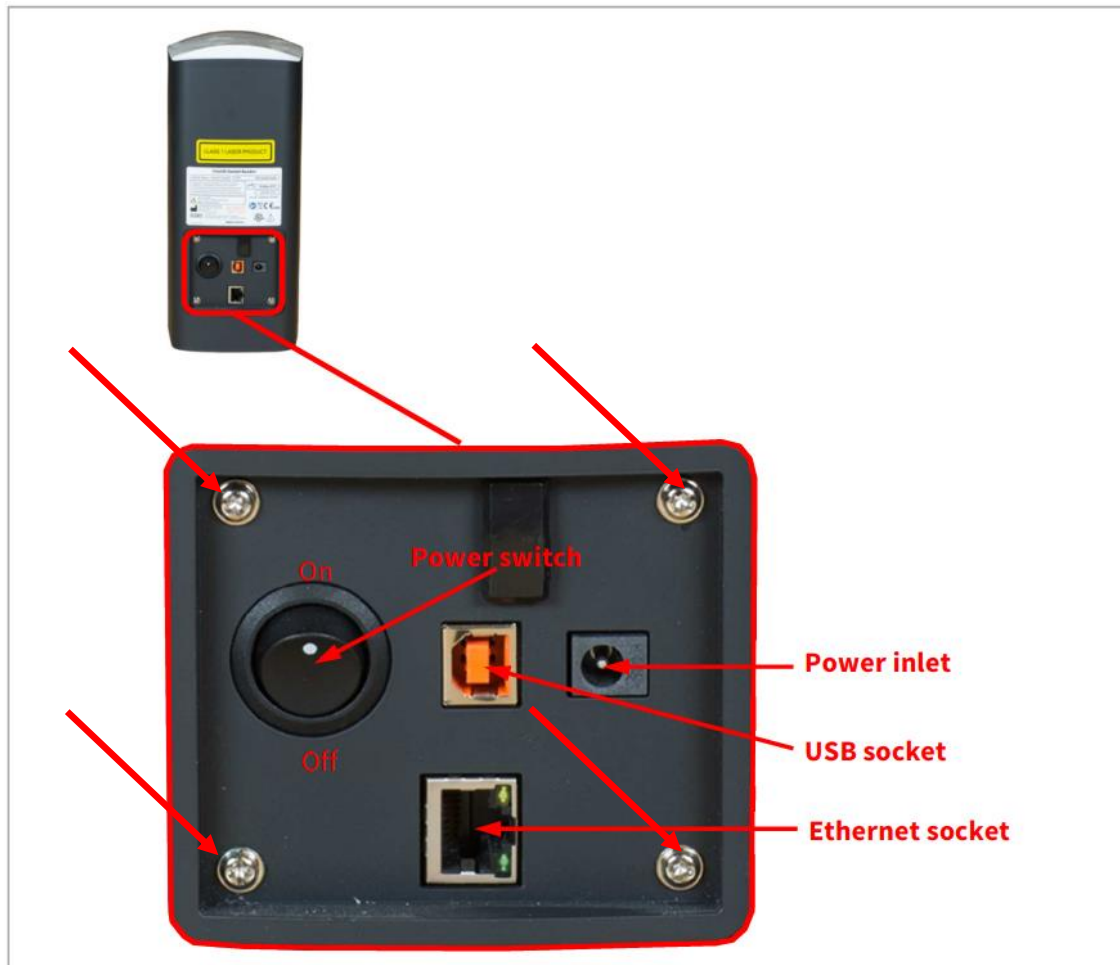
❖ The procedures on how to exchange the “RFID board”

1. Set the reader into “Sleep mode” by touching the “Sleep mode icon”



❖ The procedures on how to exchange the “RFID board”

2. Remove four screws on the back of the dental unit and remove the SD card cover.



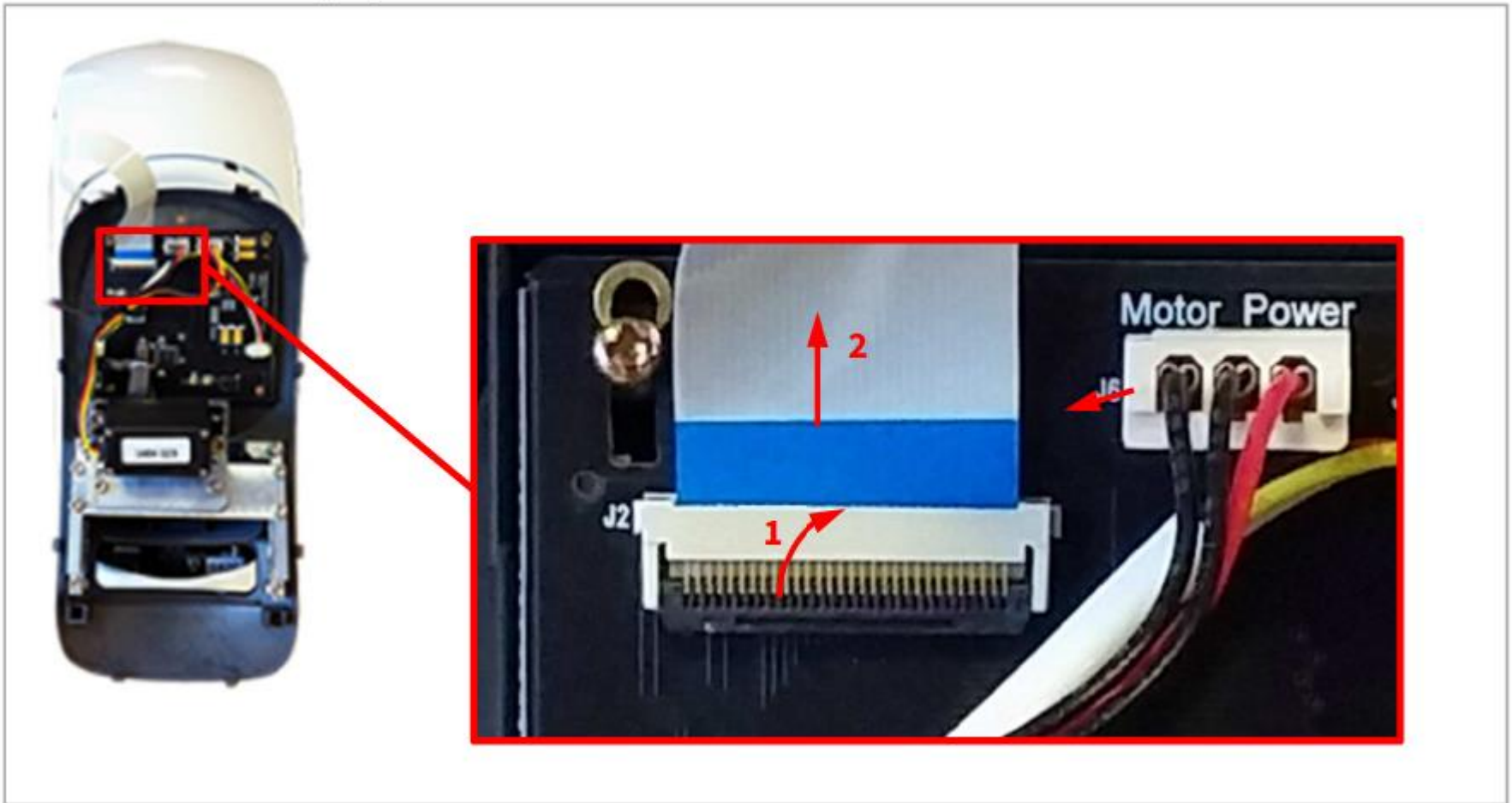
❖ The procedures on how to exchange the “RFID board”

4. Push the door inwards, then pull the front door outwards and upwards to remove the front door.



❖ The procedures on how to exchange the “RFID board”

5. Once the door is loose, tip the lock of the ribbon cable and unplug it.
6. Unplug the motor power cable.



❖ The procedures on how to exchange the “RFID board”

7. Put the reader on the side and remove 6 screws.



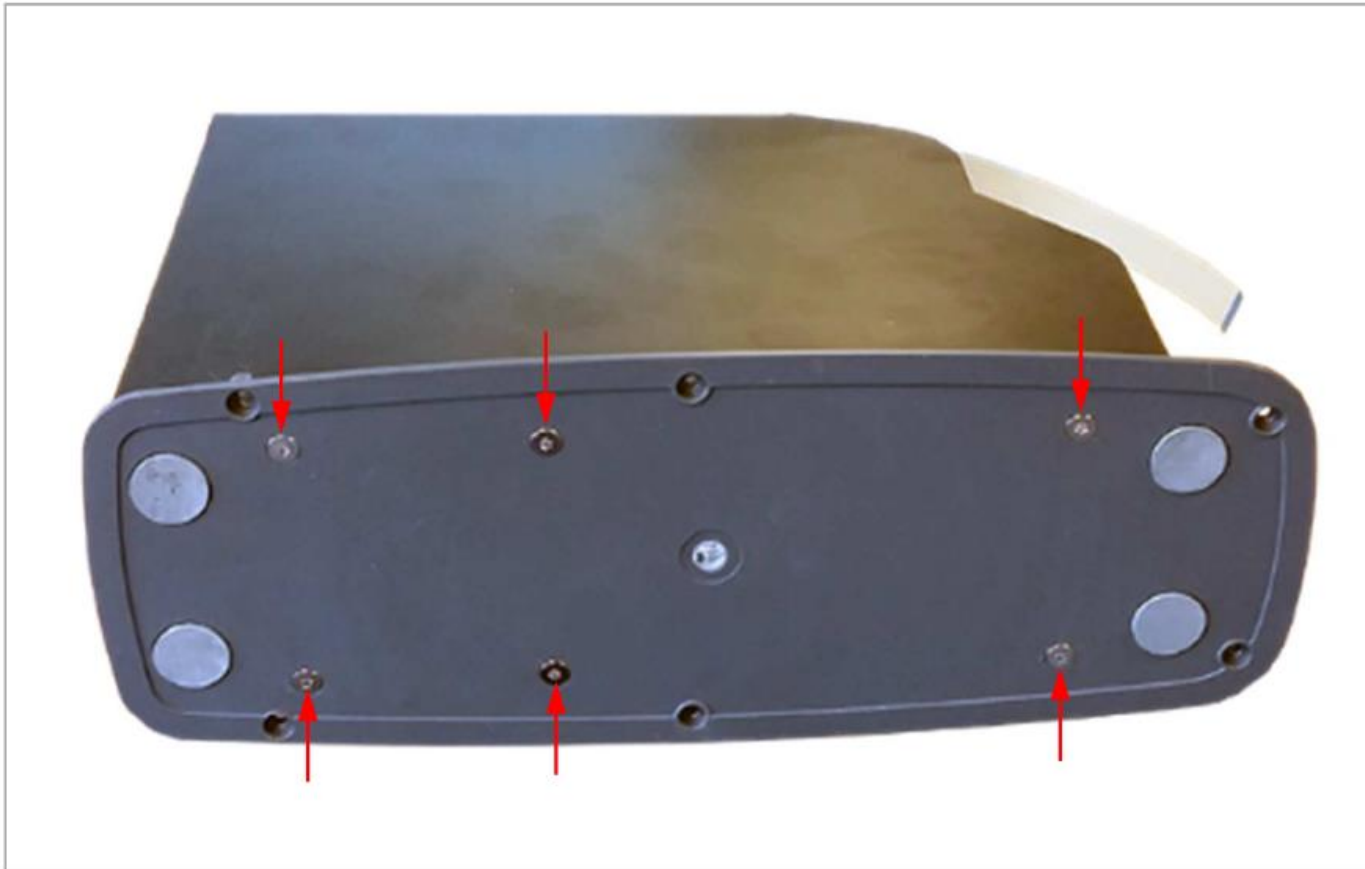
❖ The procedures on how to exchange the “RFID board”

8. Carefully lift off the top cover.



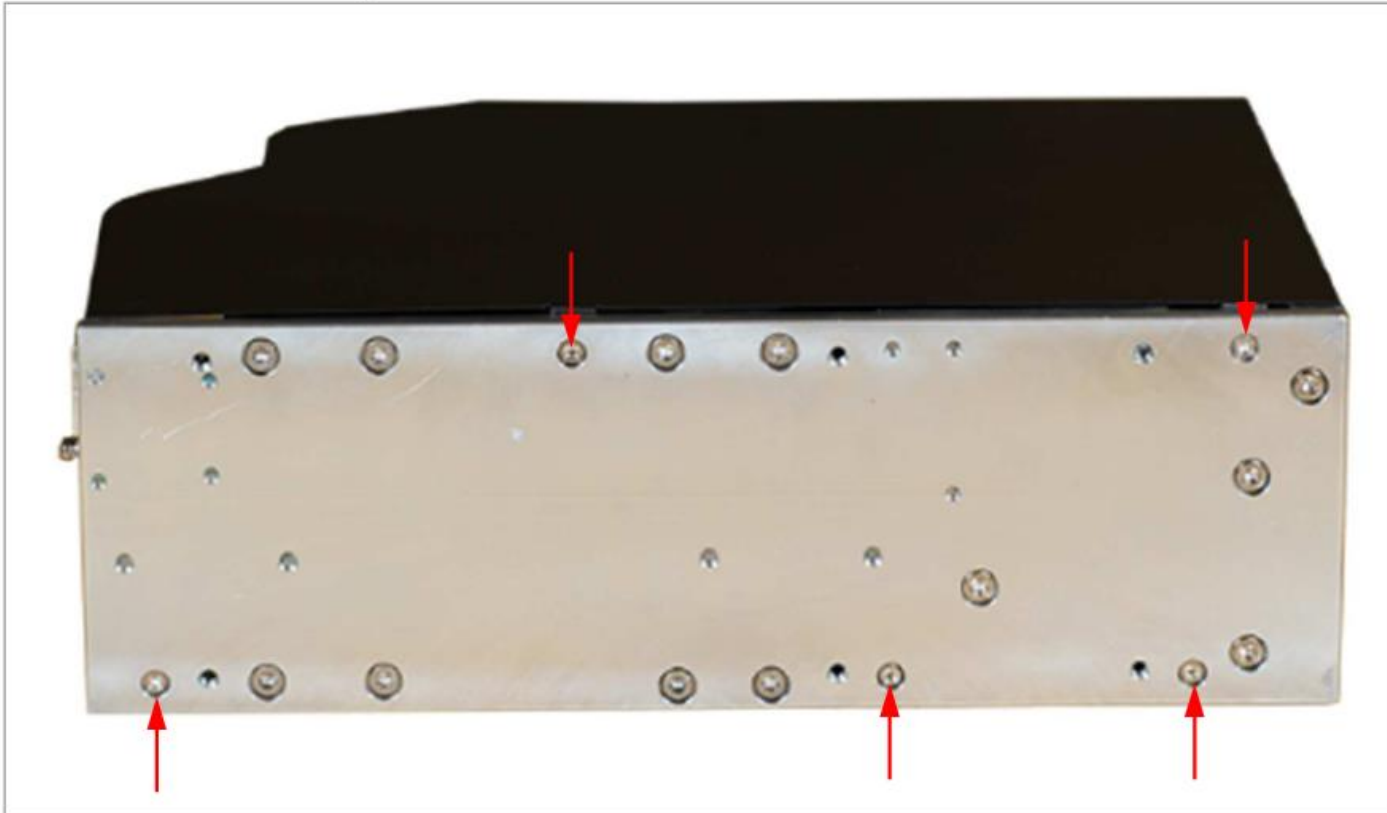
❖ The procedures on how to exchange the “RFID board”

9. Put the reader on the side and remove 6 screws.
10. Remove the bottom cover.



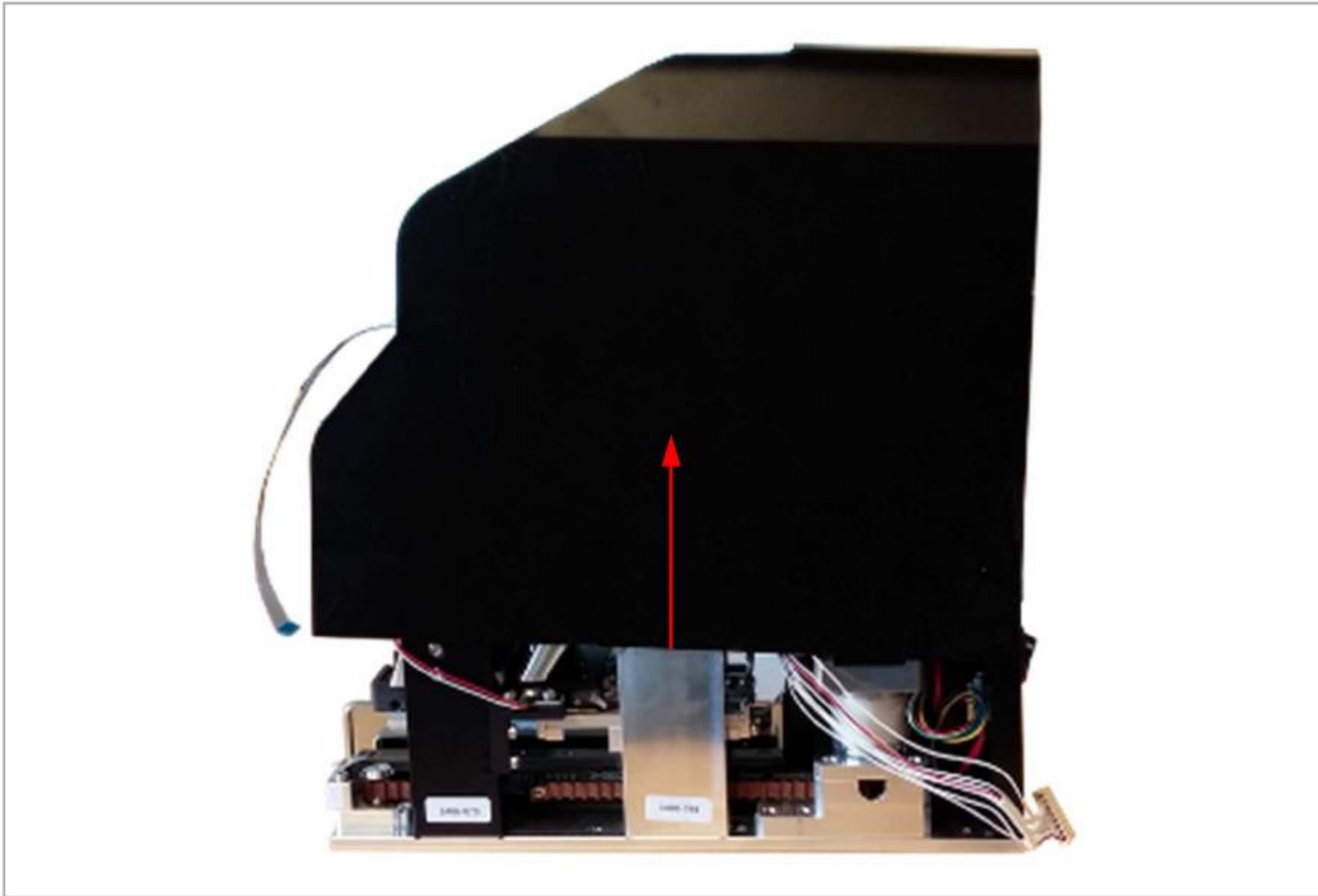
❖ The procedures on how to exchange the “RFID board”

11. Remove 5 screws.



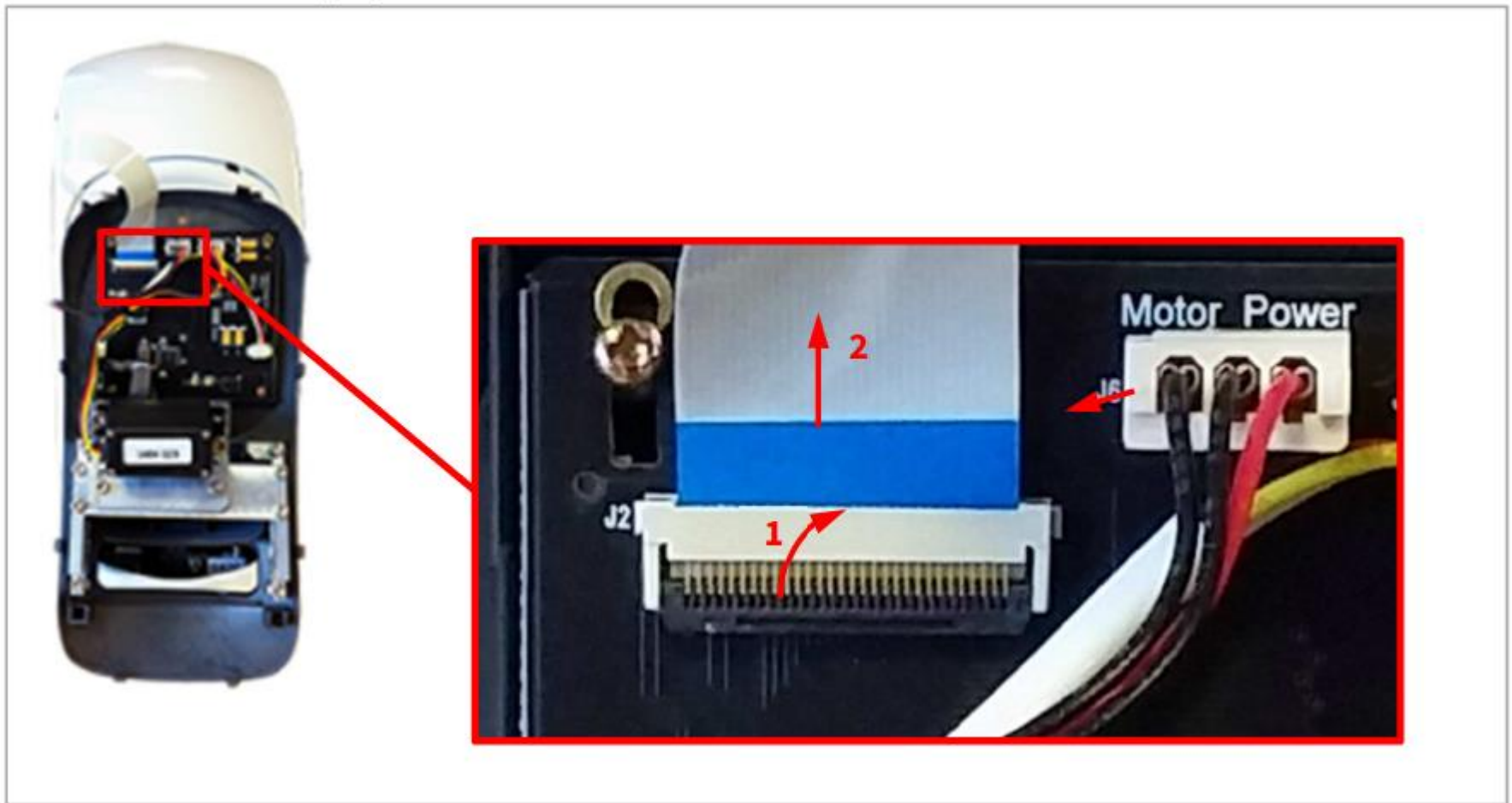
❖ The procedures on how to exchange the “RFID board”

12. Lift off the inner chassis cover.



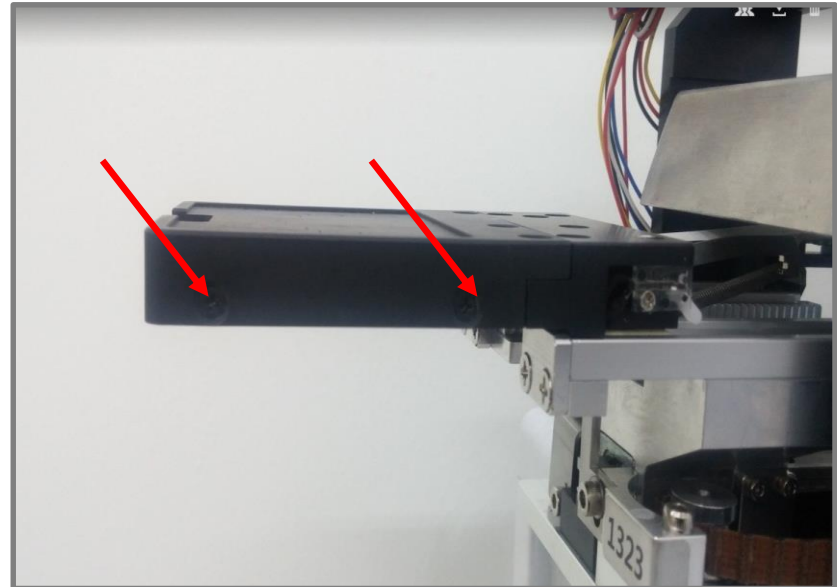
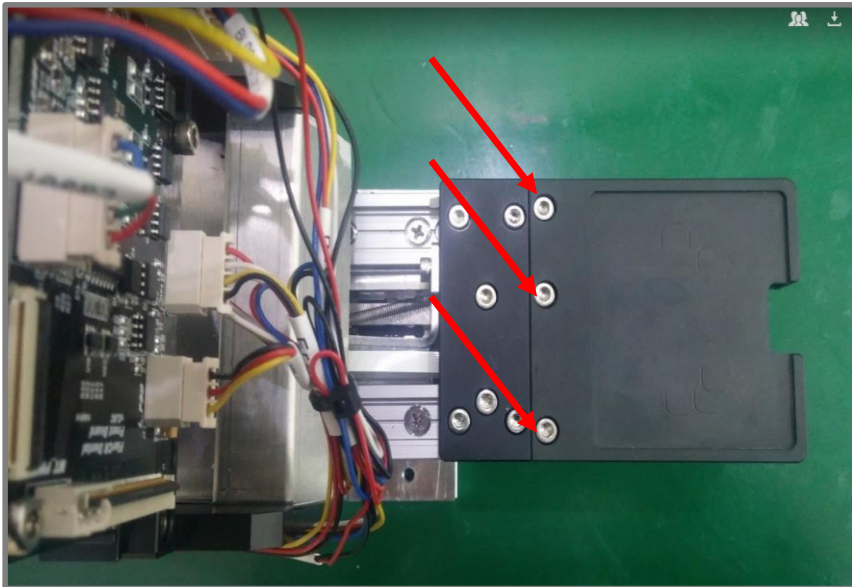
❖ The procedures on how to exchange the “RFID board”

13. Put the ribbon cable & motor power cable back to the front door.
14. Turn on the power, then tray assembly automatically moves backwards.



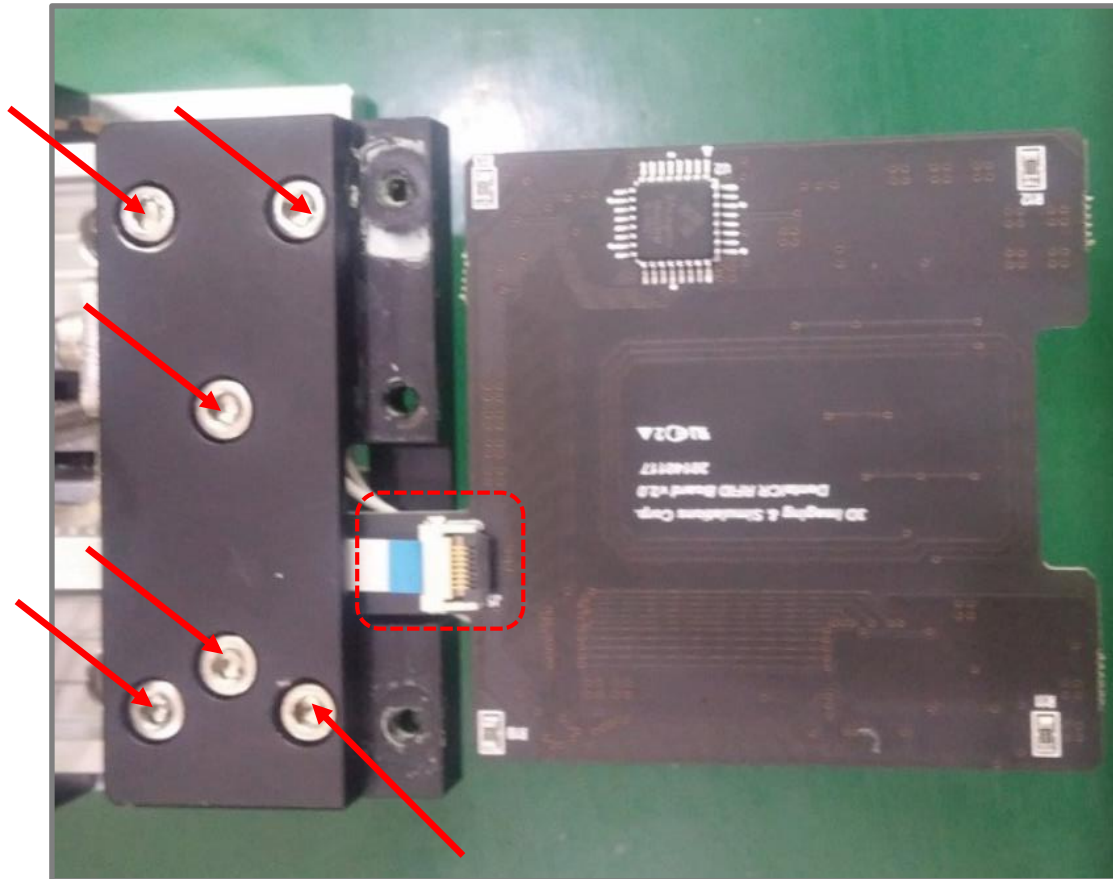
❖ The procedures on how to exchange the “RFID board”

15. Remove three screws on the IP holder.
16. Remove two screws on each side of IP holder.
17. Remove the cover



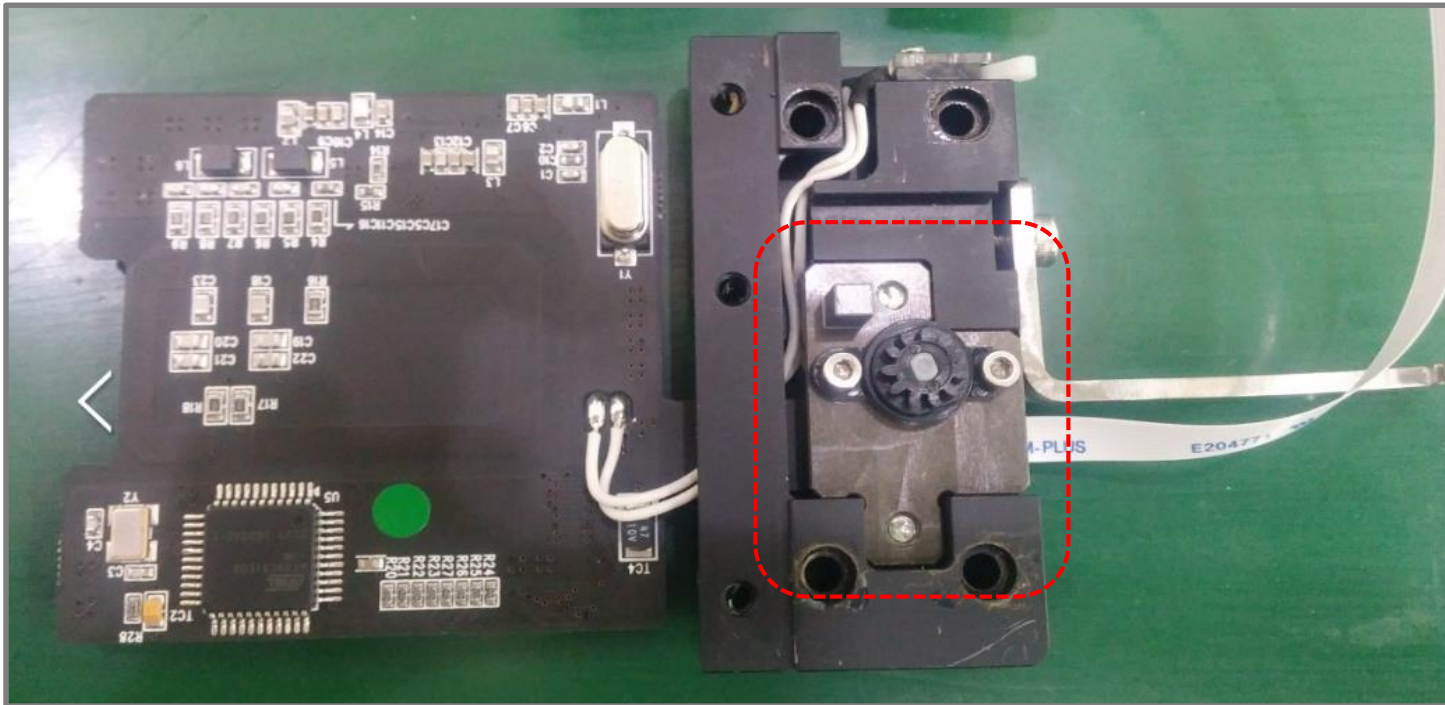
❖ The procedures on how to exchange the “RFID board”

18. Remove 6 screws.
19. Tip the lock of ribbon cable and unplug it.
20. Carefully take out IP holder.



❖ The procedures on how to exchange the “RFID board”

21. Carefully lift off the gray plate.



❖ The procedures on how to exchange the “RFID board”

22. Remove 1 screw.
23. Remove the RFID board.
24. Install the new RFID board in the reverse way.

