

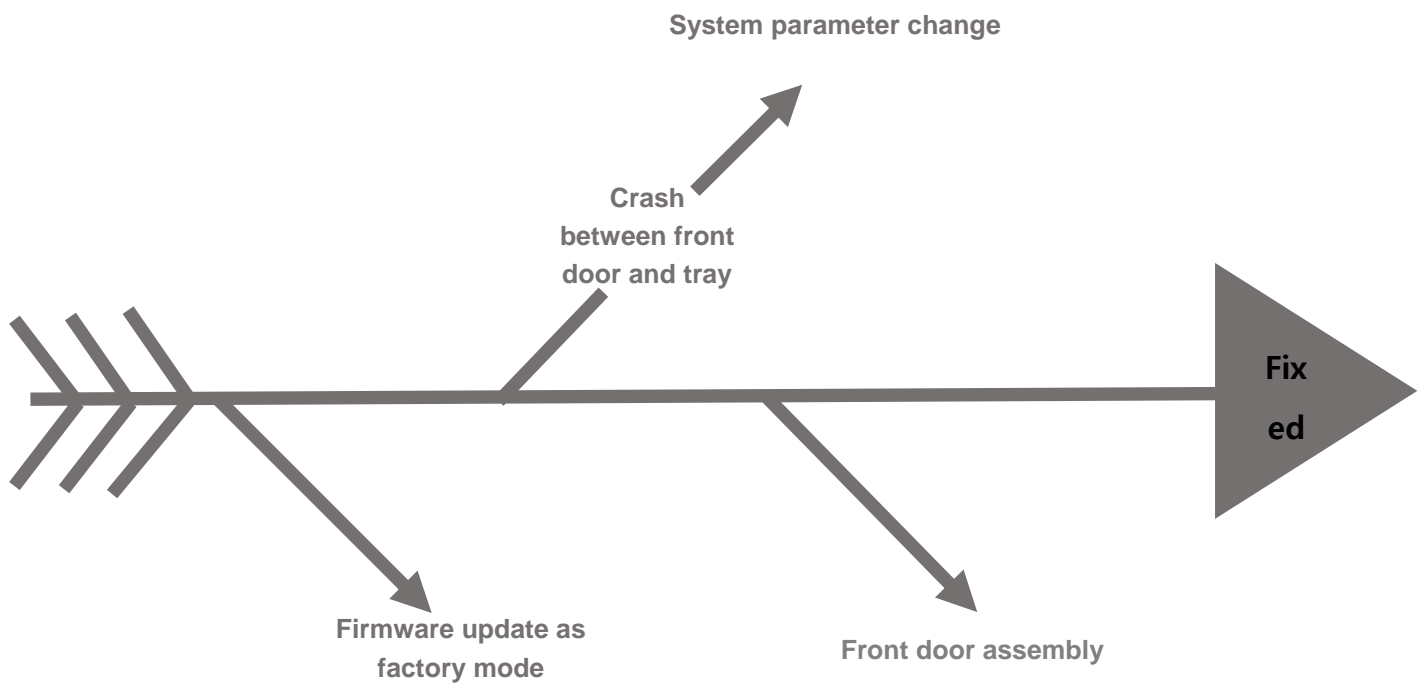
- **Model**

FireCR Dental

- **The Description of the Problem**

Front door doesn't open or close completely.

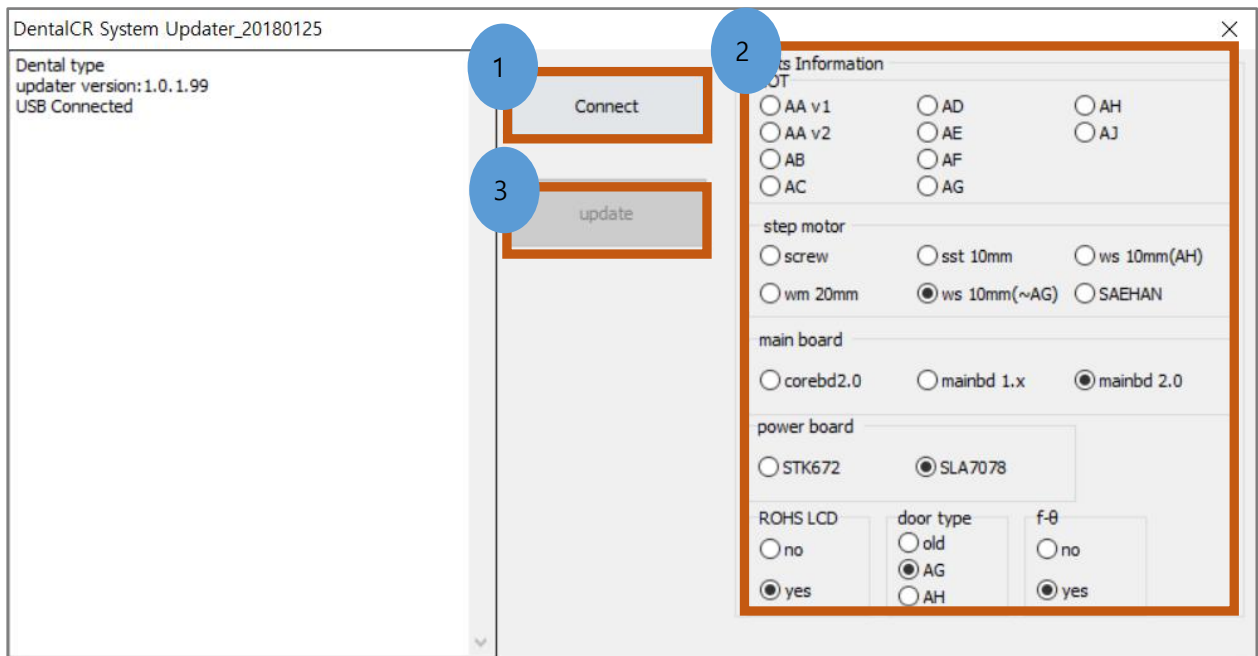
- **Fishbone Diagram**



## Firmware update

The way of firmware update as factory mode

- 1) Add a notepad named factory\_mode.txt in the QuantorDent folder.
- 2) Run firmware updater named DentalCR\_SystemUpdater.exe as administrator rights.
- 3) Click Connect
- 4) Check if Lot and each item are properly selected
- 5) Click Update



## Crash between front door and tray

Please send an email to [service1@digiray.co.kr](mailto:service1@digiray.co.kr)

## Front door assembly

Please refer to the FireCR Dental service manual for front door assembly replacement.

