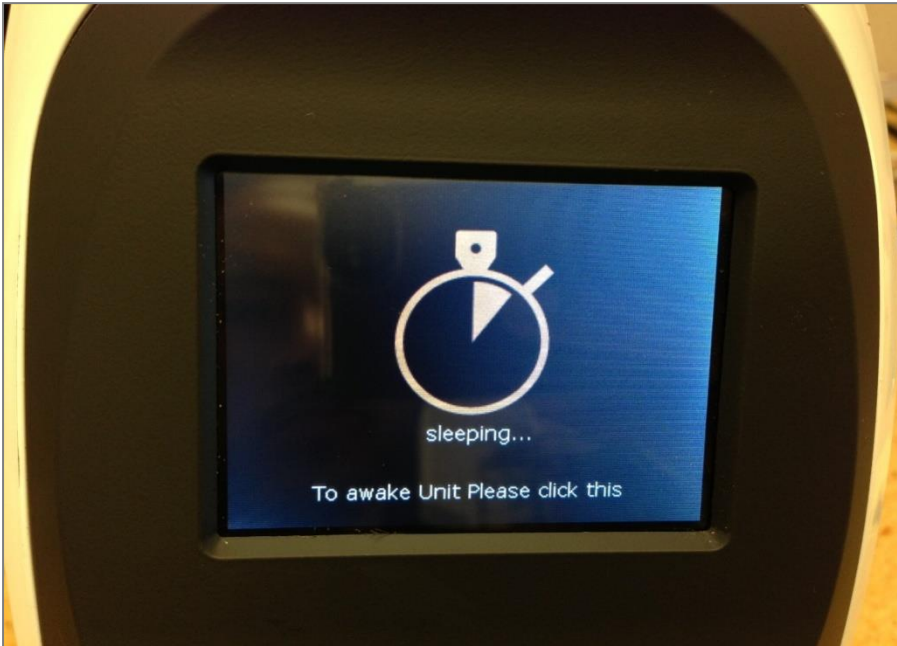


- **Replace the step motor**



[Figure1. Turn off Power]

1. Start by putting the scanner into “Sleep mode”
2. Turn off main power switch and unplug all cables in the rear



[Figure2. Front LCD Cover Removal]

3. Use a thin flat head screw driver to gently pry out the 8 clips around the front cover.



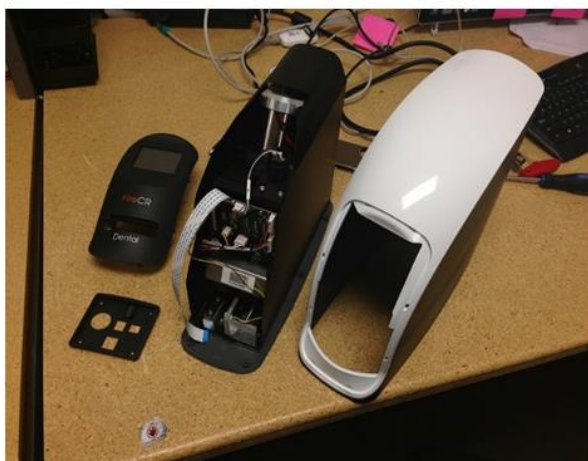
[Figure3. Front LCD Cover Removal]

4. Unplug the harness and ribbon cable from the back of the LCD board



[Figure4. Back Cover Removal]

5. Remove the 4 Allen head screws holding the back cover on



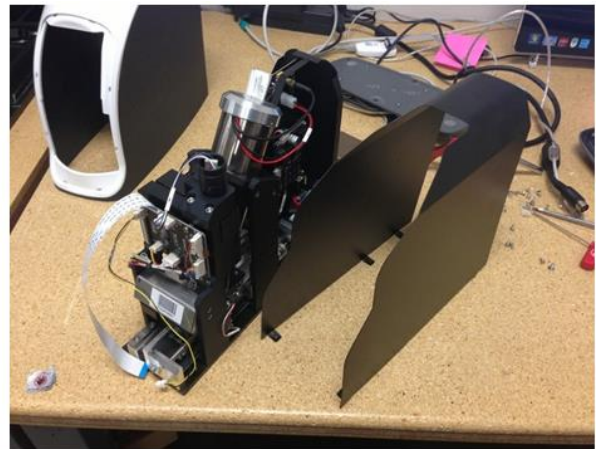
[Figure5. Top Cover Removal]

6. Turn the scanner to its side and locate the outer 6 Allen head screws on the bottom cover.
7. Lift and remove top cover



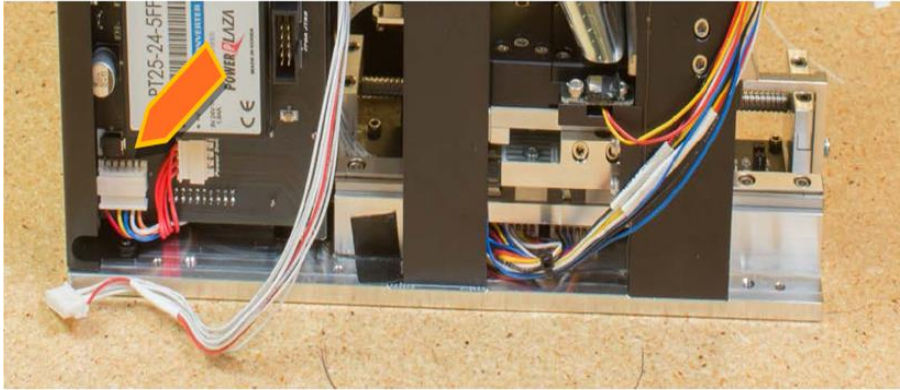
[Figure6. Bottom Cover Removal]

8. Turn the scanner to its side and locate the 6 Allen head screws on the bottom cover that attach it to the bottom plate



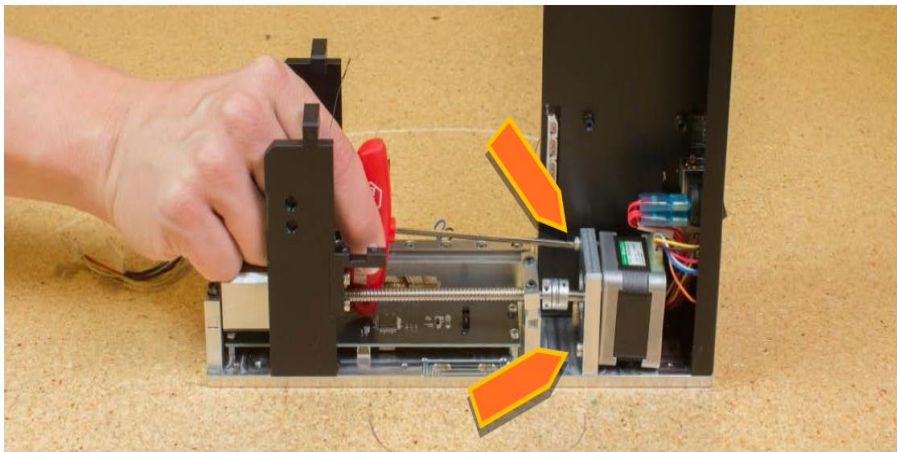
[Figure7. Internal Chassis Cover Removal]

9. After removing the bottom cover, locate the 6 Allen head screws holding the internal chassis cover on
10. Lift and remove



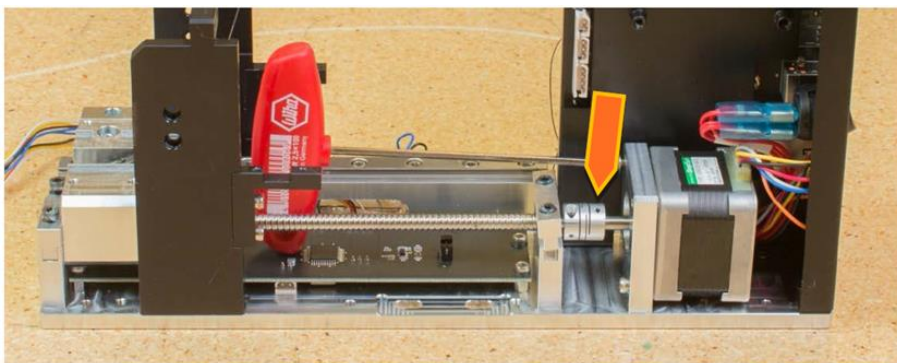
[Figure8. Step motor Removal]

11. Unplug the connector from the power board



[Figure9. Step motor Removal]

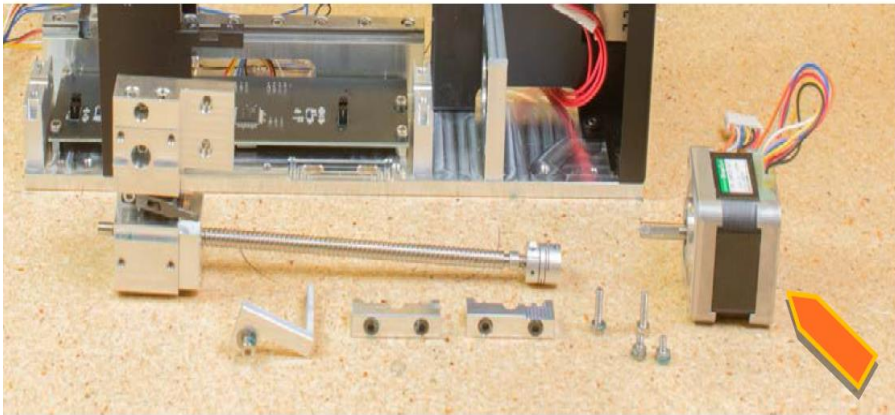
12. Remove 2 screws (2.5mm hex)



[Figure10. Step motor Removal]

13. Loosen the screw (1.5mm hex) from the coupler.

14. Slide the motor back and lift



[Figure11. Step motor Removal]

14. Replace the stage motor.
15. Reinstall in reverse order